



Laboratory Procedure Manual

Analyte: arsenobetaine, arsenocholine, trimethylarsine oxide, monomethylarsonic acid, dimethylarsinic acid, arsenous (III) acid, arsenic (V) acid, total arsenic

Matrix: Urine

Method: Urine arsenic speciation
HPLCICPDRCMS
(Renamed from High Performance Liquid Chromatography Inductively Coupled Plasma Dynamic Reaction Cell Mass Spectrometry (HPLC-ICP-DRC-MS))

Method No: ITU003B (Formerly 0161A/01-OD)

Revised: **September 14, 2004**

as performed by:

Inorganic Toxicology and Nutrition Branch
Division of Laboratory Sciences
National Center for Environmental Health

contact:

Dr. Robert L. Jones
Phone: 770-488-7991
Fax: 770-488-4097
Email: RLJones@cdc.gov

Dr. Eric J. Sampson, Director
Division of Laboratory Sciences

Important Information for Users

CDC periodically refines these laboratory methods. It is the responsibility of the user to contact the person listed on the title page of each write-up before using the analytical method to find out whether any changes have been made and what revisions, if any, have been incorporated.

This document details the Lab Protocol for testing the items listed in the following table:

File Name	Variable Name	SAS Label (and SI units)
UAS_E	URXUAS3	Urinary Arsenous Acid (µg/L)
	URXUAS5	Urinary Arsenic Acid (µg/L)
	URXUAB	Urinary Arsenobetaine (µg/L)
	URXUAC	Urinary Arsenocholine (µg/L)
	URXUDMA	Urinary Dimethylarsonic Acid (µg/L)
	URXUMMA	Urinary Monomethylarsonic Acid (µg/L)
	URXUTM	Urinary Trimethylarsine Oxide (µg/L)
	URXUAS	Urinary Total Arsenic (µg/L)

1. CLINICAL RELEVANCE AND TEST PRINCIPLE

The method described in this manual assesses arsenic exposure, as defined by exposure to individual arsenic species by analyzing urine through the use of high performance liquid chromatography (HPLC) coupled to inductively coupled-plasma dynamic reaction cell-mass spectrometry (ICP-DRC-MS). Urine is analyzed because urinary excretion is the major pathway for eliminating arsenic from the mammalian body. This hyphenated method will provide accurate quantification of seven urinary arsenic species: arsenite (valence III) and arsenate (valence V), organic forms of arsenic to include monomethylarsonic acid (MMA) and dimethylarsinic acid (DMA), trimethylarsine oxide (TMAO), arsenocholine (AsCo), arsenobetaine (AsB) (see TABLE 1-1).

a. Test Principle

The concentration of arsenate [As(V)], arsenite [As(III)], MMA, DMA, TMAO, AC, AB are determined by using high performance liquid chromatography (HPLC) to separate the species coupled to an ICP-DRC-MS to detect the arsenic species. This analytical technique is based on separation by anion-exchange chromatography (IC) followed by detection using quadrupole ICP-MS technology and includes DRC™ technology (35), which minimizes or eliminates many argon-based polyatomic interferences (36) will require 0.5 mL of urine. Arsenic species column separation is largely achieved due to differences in charge-charge interactions of each negatively-charged arsenic component

Urine arsenic species HPLC/ICP/DRC/MS (Formerly Arsenic species in Urine)
NHANES 2007-2008

in the mobile phase with the positively-charged quaternary ammonium groups bound at the column's solid-liquid interface. Upon exit from the column, the chromatographic eluent goes through a nebulizer where it is converted into an aerosol upon entering the spray chamber. Carried by a stream of argon gas, a portion of the aerosol is transported through the spray chamber and then through the central channel of the plasma, where it is heated to temperatures of 6000-8000° K. This thermal energy atomizes and ionizes the sample. The ions and the argon enter the mass spectrometer through an interface that separates the ICP, which is operating at atmospheric pressure (approximately 760 torr), from the mass spectrometer, which is operating at approximately 10⁻⁵ torr. The mass spectrometer permits detection of ions at each mass-to-charge ratio in rapid sequence, which allows the determination of individual isotopes of an element. Once inside the mass spectrometer, the ions pass through the ion optics, then through the DRC™, and finally through the mass-analyzing quadrupole before being detected as they strike the surface of the detector. The ion optics uses an electrical field to focus the ion beam into the DRC™. The DRC™ component is pressurized with an appropriate reaction gas and contains a quadrupole. In the DRC™, elimination or reduction of argon-based polyatomic interferences takes place through the interaction of the reaction gas with the interfering polyatomic species in the incoming ion beam. The quadrupole in the DRC™ allows elimination of unwanted reaction by-products that would otherwise react to form new interferences.

TABLE 1-1: SPECIES OF ARSENIC

Name	Abbreviation	Structural Formula	pK _a
Arsenobetaine	AB	$\begin{array}{c} \text{CH}_3 \\ \\ \text{H}_3\text{C}-\text{As}^+-\text{CH}_2\text{COOH} \\ \\ \text{CH}_3 \end{array}$	-
Arsenocholine	AC	$\begin{array}{c} \text{CH}_3 \\ \\ \text{H}_3\text{C}-\text{As}^+-\text{CH}_2\text{CH}_2\text{OH} \\ \\ \text{CH}_3 \end{array}$	-
Monomethyl arsenate	MMA	$\begin{array}{c} \text{OH} \\ \\ \text{H}_3\text{C}-\text{As}^{(\text{V})} \\ // \quad \backslash \\ \text{O} \quad \text{OH} \end{array}$	4.1, 8.7
Dimethylarsinic acid	DMA	$\begin{array}{c} \text{CH}_3 \\ \\ \text{H}_3\text{C}-\text{As}^{(\text{V})} \\ // \quad \backslash \\ \text{O} \quad \text{OH} \end{array}$	6.2
Trimethylarsine oxide	TMAO	$\begin{array}{c} \text{CH}_3 \\ \\ \text{H}_3\text{C}-\text{As}^{(\text{V})} \\ // \quad \backslash \\ \text{O} \quad \text{CH}_3 \end{array}$	-
Arsenic (V) acid (arsenate)	As(V)	$\begin{array}{c} \text{OH} \\ \\ \text{O}=\text{As}^{(\text{V})} \\ / \quad \backslash \\ \text{HO} \quad \text{OH} \end{array}$	2.2, 7.0, 11.5
Arsenous (III) acid (arsenite)	As(III)	$\begin{array}{c} \text{OH} \\ \\ \text{HO}-\text{As}^{(\text{III})} \\ \backslash \\ \text{HO} \end{array}$	9.2, 12.1, 13.4

Safety Precautions

Precautionary information that is important to protecting personnel and safeguarding equipment will be presented inside a box, such as this one, throughout the procedure where appropriate.

Follow universal precautions. Wear gloves, a lab coat, and safety glasses while handling human blood, plasma, serum, urine or other bodily fluid or tissue. Place disposable plastic, glass, and paper (e.g., pipette tips, autosampler tubes, and gloves) that come in contact with human biological fluids, such as urine, in a biohazard autoclave bag. Keep these bags in appropriate containers until they are sealed and autoclaved. When work is finished, wipe down all work surfaces where human biological fluid was handled with a 10% (v/v) sodium hypochlorite solution. The use of the foot pedal on the Micromedic Digiflex™ is recommended because it reduces analyst contact with work surfaces that have been in contact with human biological fluid and also keeps the hands free to hold specimen cups and autosampler tubes. Dispose of all biological samples and diluted specimens in a biohazard autoclave bag at the end of the analysis according to CDC/DLS guidelines for disposal of hazardous waste.

PerkinElmer provides safety information that should be read before operating the instrument. This information is found in the PerkinElmer ELAN® 6100 ICP-DRC-MS System Safety Manual. Possible hazards include ultraviolet radiation, high voltages, radio-frequency radiation, and high temperatures.

Caution!

Exercise caution when handling and dispensing concentrated nitric acid. Always remember to add acid to water. Nitric acid is a caustic chemical that is capable of severe eye and skin damage. Wear powder-free gloves, a lab coat, and safety glasses. If nitric acid comes in contact with any part of the body, quickly wash the exposed area with copious quantities of water for at least 15 minutes.

2. DATA SYSTEM MANAGEMENT

To maintain the integrity of specimen and analytical data generated by this method, eliminate hand entry of specimen identifiers or analytical results whenever possible, proofread all transcribed data, and regularly defragment and back up the ICP-MS computer's hard drive.

a. Data Entry and Transfer

Whenever possible, use bar code scanners to enter sample identifiers into the ICP-DRC-MS computer software to avoid errors associated with the keyboard-entry process and to speed up sample processing. When bar code scanners cannot be used, proofread transcribed data after entry. Handle or transfer data electronically when reporting or moving data to other computerized data-handling software. In the Inorganic Toxicology and Nutrition Branch, sample analysis results generated by this method are stored for long periods in Microsoft Access™ or MS SQL Server 7™ database software. The results should include at least the analysis date, analytical run number, quality-control

(QC) results for the run, results of specimen analysis by specimen identification (ID), and method identifier.

b. Routine Computer Hard Drive Maintenance

Defragment the computer hard drive regularly by using software such as Microsoft Windows® Disk Defragmenter (located in Start > Programs > Accessories > System Tools) or an equivalent backup program to maximize computer performance and maintain data integrity for files on the hard drive. An entry will automatically be made in the Windows™ system event log when this process is done and will provide documentation of this step.

c. Data Backup

(1) Schedule of Data Backups

Weekly. Full data backups onto one or more recordable compact discs (CD-R) or digital video discs (DVD).

Daily. Full data backups onto an external hard drive.

(2) Backup Procedures

Whenever making a backup (daily or weekly) include the directories and subdirectories:

C:\elandata (include all subdirectories)

C:\hplc (must include subdirectories “data” and “methods”, also include other relevant directories)

Before making weekly backups, saving a copy of the Windows™ event log in the active “elandata” directory will ensure archiving of all recent software system events (including communications between ICP-DRC-MS and ELAN® software, as well as times of hard drive defragmentation, and other Windows™ system events).

(a) External Hard Disk Backups

Connect the ELAN data system computer to an external hard disk with sufficient storage capacity to store several copies of the backup files (≥ 18 gigabytes).

Configure Microsoft Windows® Backup™ (located in Start > Programs > Accessories > System Tools) program to do a daily backup of the ELAN data system computer’s data directories (see *Backup Procedures*)

(b) Compact Disc Backups

Use CD-R disks only (recordable compact disks), *not* CD-RW disks (rewritable compact disks).

Record the CD-R so that after creation the recordable compact disk cannot be written to again (to prevent any accidental over-writing of stored data).

Use Adaptec “Easy CD Creator”™ or equivalent software to backup.

(c) Removing Data from the ICP-DRC-MS Computer Hard Drive

When the active “elandata” and “hplc” directories on the ICP-DRC-MS computer hard drive becomes too large to fit onto a single recordable compact disk, remove the oldest data on the hard drive so that a regular backup can be done onto a single CD-R. Usually, this procedure can be done annually.

Back up the oldest data on the hard drive in duplicate onto two CD-R disks. Manually select each dataset folder (subdirectories under “C:\elandata\dataset” and “C:\hplc\data”) and other relevant files (i.e., optimization, tuning, and sample files) that are to be included on these backups.

Verify that backup CD-R disks operate correctly before deleting any data from the hard drive. To verify the operation of a CD-R disk, open any file on the disk by using the appropriate computer software (ICP-DRC-MS software).

After verifying that all backups are operational, delete the original data from the hard drive.

Keep one copy of the CD-R disk in a building other than the laboratory (in case of fire). Keep the other near the ICP-MS laboratory.

(d) Backup of Sensitive Data

Make a backup for sensitive data on duplicate, recordable compact disk. Store the two CD-R disks in two different buildings.

d. Documentation of System Maintenance

Computer Maintenance: Record any maintenance of computer hardware, HPLC or ICP-DRC-MS software in the instrument logbook. Place other electronic records relating to integrity of the data and hard drive in the Windows™ event log. Back up the event log on a regular basis by saving a copy in the active “elandata” directory. The event log will then be backed up along with the ELAN data when backup CD-R disks and tapes are made.

Instrument Maintenance: Document system maintenance in hard copies of data records (i.e., daily maintenance checklists, PerkinElmer service records, and instrument log book) as well as in electronic records relating to instrument optimization (default.dac), tuning (default.tun).

3. COLLECTING, STORING, AND HANDLING SPECIMENS; CRITERIA FOR REJECTING SPECIMENS

a. Specimen Type

Specimen type is urine. No special instructions for fasting or special diets are required of patient or study subjects.

b. Specimen Collection, Handling and Storage

Optimal amount of specimen is 0.5 mL; minimum is 0.25 mL. Use sterile specimen containers for specimen acquisition. Acceptable containers for allotment of urine for this

method include 15-mL PP centrifuge tubes (e.g., Becton, Dickinson and Company model number 352097). Screen specimen collection cups, containers and sample tubes for arsenic contamination before use.

Specimen handling conditions are outlined in the division protocol for urine collection and handling. To prevent inter-conversion of arsenic species, immediately store and transport urine specimens at $\leq -20^{\circ}\text{C}$. Upon receipt, they must remain frozen at $\leq -20^{\circ}\text{C}$ until time for analysis. Refreeze at $\leq -20^{\circ}\text{C}$ portions of the sample that remain after analytical aliquots are withdrawn. Samples thawed and refrozen several times are compromised.

c. Criteria for an Unacceptable Specimen

The criteria for an unacceptable specimen are either a low volume (< 0.25 mL) or suspected contamination due to improper collection procedures or collection devices. Specimen contact with dust or dirt may compromise test results. In all cases, request a second urine specimen.

4. PROCEDURES FOR MICROSCOPIC EXAMINATIONS

Not applicable for this procedure.

5. CHEMICALS, STANDARDS, AND QUALITY CONTROL MATERIAL

a. Chemicals and Standards

1. Water, high purity (≥ 18 M Ω -cm resistivity).
2. Ammonium carbonate, (CAS# 506-87-6), MW 96.09, Puratonic® 99.999% Alfa Aesar, Stock #12980 or equivalent.
3. Tris (hydroxymethyl) aminomethane, (CAS# 77-86-1), MW 121.14, Bio-refined, GFS Chemicals, Stock# 1948 or equivalent.
4. Ammonium Sulfate, (CAS# 7783-20-2), MW 132.13, Mallinckrodt GenAR, Stock# 7725 or equivalent.
5. Ammonium Acetate, (CAS# 631-61-8), MW 77.08, ICN Biochemicals, Stock# 193848 or equivalent.
6. 10% hydrogen in argon gas mixture, $\geq 99.999\%$ purity (Matheson Tri-Gas Products, San Jose, California, or equivalent vendor).
7. Double-distilled nitric acid (GFS Chemicals Inc., Columbus, OH) or equivalent vendor.
8. Liquid argon.
9. Acetonitrile, HPLC or Spectrophotometer grade.
10. Bleach (10% sodium hypochlorite solution) from any vendor.
11. Acetic Acid Optima Grade
12. Ammonium Hydroxide Optima Grade
13. Base urine pooled from anonymous donors or purchased from vendor.

b. Standards

1. Arsenic (III) oxide, As_2O_3 , CAS 1327-53-3, MW 197.84 (Catalogue # 20,267-3, Sigma-Aldrich, Milwaukee WI 53201).
2. Arsenic (V) oxide hydrate, $\text{As}_2\text{O}_5 \cdot x\text{H}_2\text{O}$, CAS 12044-50-7, MW 229.84 (Catalogue # 36,345-7, Sigma-Aldrich, Milwaukee WI 53201).
3. Arsenobetaine, $(\text{CH}_3)_3\text{AsCH}_2\text{COOH}$, CAS 64436-13-1, MW 178.06 (Catalogue # 11093, Sigma Chemicals Co., St. Louis MO).
4. Arsenocholine bromide, $(\text{CH}_3)_3\text{AsCH}_2\text{CH}_2\text{OH} \cdot \text{Br}$, MW 244.99 (Argus, Vernio, Italy).
5. Dimethylarsinic acid, $(\text{CH}_3)_2\text{As}(\text{OH})_2$, MW 138.01 (Catalogue # PS-51, Chem Service, West Chester, PA, 19381).
6. Disodium methyl arsenate, $\text{CH}_3\text{AsO}_3 \cdot 6\text{H}_2\text{O}$, CAS 144-21-8, MW 291.9 (Catalogue # PS-281, Chem Service, West Chester, PA, 19381).
7. Trimethylarsine oxide, $(\text{CH}_3)_3\text{AsO}$, CAS 4964-14-1, MW 136.03 (Argus Chemicals, Vernio, Italy).

c. Quality Control Material

Quality control (QC) material is made from pools of human urine collected from several anonymous donors. See the *Preparation of Quality Control Material* section for details of preparation. The two urine QC pools made for arsenic speciation assay are designated as:

QC level	QC Designation ID
low pool	LU-yy###
high pool	HU-yy###

Where substitutions are: yy = the last two digits of production year, and ### = assigned pool identification number.

QC material that is to be used for bench quality control purposes will need to be "characterized" as described in the section *Establish QC limits for each QC pool*.

6. INSTRUMENTATION, EQUIPMENT, SOFTWARE AND SUPPLIES

a. Instrumentation

(1) HPLC System

1. HPLC Pump, specifically, PerkinElmer® Series 200™ Pump, made with biocompatible materials consisting of titanium, polyethylene glycol (PEG) and other polymers in the fluid path (PerkinElmer Instruments., Shelton CT).
2. HPLC Autosampler, specifically, PerkinElmer® Series 200™ Autosampler, made with biocompatible materials consisting of titanium, PEEK and other polymers in the fluid path (PerkinElmer Instruments, Shelton CT).
3. Autosampler temperature cooling tray for 100 samples, specifically,

Urine arsenic species HPLC/ICP-DRC/MS (Formerly Arsenic species in Urine)
NHANES 2007-2008

PerkinElmer® Series 200™ Peltier Cooling Tray and Assembly.

4. Column oven, specifically, PerkinElmer® Series 200™ Column Oven.
5. Chromatography data handling software, specifically, TotalChrom™ Workstation, version 6.0.2 or later (PerkinElmer Instruments, Shelton CT).
6. Anion-exchange HPLC column, specifically, PRP-X100™, 4.6 X 150 mm dimensions, 3 µm particle size in PEEK hardware (P/N 79175, Hamilton Company, Reno NV).
7. Guard column and cartridge, 2.3 x 30 mm PRP-X100™, 10-20 µm particle size (P/N 79383, Hamilton Company, Reno NV,).
8. Autosampler injection needle, stainless steel (P/N N293-0023, PerkinElmer Instruments, Shelton CT).
9. Autosampler injector loop, 20 µL (P/N 9055-022, Rheodyne Co.).
10. Autosampler injector loop, 200 µL (P/N 9055-025, Rheodyne Co.).
11. Electrically-activated 6-port switching valve, (P/N EV750-100, Rheodyne Co.).

(2) ICP-DRC-MS System

1. Inductively-coupled plasma mass spectrometer, specifically, the ELAN™ DRC II with Dynamic Reaction Cell (DRC™) capability (PerkinElmer Instruments, Shelton CT).
2. ELAN instrument control and data handling software, version 2.4 with service pack 2 (PerkinElmer Instruments, Shelton CT).
3. Cyclonic spray chamber (PerkinElmer Instruments, Shelton CT).
4. Concentric glass nebulizer, (P/N SB-50-A2, J. E. Meinhard Associates, CA).
5. External peristaltic 4-channel peristaltic pump, "Minipuls 3" (Gilson, Middleton, WI) or equivalent.

b. Equipment

1. Water purification system for providing ultrapure water with a resistivity $\geq 18 \text{ M}\Omega\text{-cm}$.
2. Eppendorf® Model 5417R refrigerated centrifuge fitted with FA45-24-11 fixed angle rotor or equivalent refrigerated centrifuge capable of $\geq 15,000 \text{ X G}$ for centrifugation of 1.5 mL capacity microcentrifuge tubes.
3. High-precision analytical balance capable of accurately weighing milligram amounts of material to the tenth of a milligram or better.
4. Analytical balance for routine weighing of material to the nearest hundredth of a gram and with a loading capacity of at least 200 g.
5. pH meter with one hundredth's of a pH unit readout or better, fitted with glass electrode (pH probe).
6. Temperature compensation probe for pH meter.
7. Micromedic Digiflex™ automatic pipette (or equivalent) equipped with 10.0-mL dispensing syringe, 2,000-µL sampling syringe, 0.75-mm tip, and foot pedal (LABREPO, Inc., 101 Witmer Rd., Suite 700, Horsham, PA 19044).
8. Calibrated hand-held adjustable pipettors that cover the range of accurate liquid delivery from 50 µL to 5000 µL. Research Pro™ Eppendorf® electronic programmable pipettors (distributed by Brinkmann Instruments, Westbury NY).

Urine arsenic species HPLC/ICP/DR/CMS (Formerly Arsenic species in Urine)
NHANES 2007-2008

9. "Repeater Plus" Pipetter (Eppendorf® catalogue # 2226020-1, distributed by Brinkmann Instruments, Westbury NY), or equivalent.
 10. Gas regulator for 10% DRC gas (Matheson Tri-Gas Products, San Jose, California, or equivalent vendor).
 11. Gas regulator for liquid argon dewar (Matheson Tri-Gas Products, San Jose, California).
- c. Computer Software
1. pdFactory Pro 1.52 or later version, FinePrint Software, LLC, www.fineprint.com or equivalent. This product is used for creating electronic Portable Document Files (pdf) directly from Microsoft® Windows print dialog box.
 2. A custom Microsoft Excel® macro procedure named "TransformHPLCdata". See **Error! Reference source not found.** section in the **Error! Reference source not found.** for description and macro code.
- d. Supplies
1. 5-200 µL pipette tips, 960 tips per case (Eppendorf® catalogue # 2235137-1, distributed by Brinkmann Instruments, Westbury NY), or equivalent.
 2. 20-300 µL pipette tips, 960 tips per case (Eppendorf® catalogue # 2235144-3, distributed by Brinkmann Instruments, Westbury NY), or equivalent.
 3. 1000 µL pipette tips, 960 tips per case (Eppendorf® catalogue # 2249044-3, distributed by Brinkmann Instruments, Westbury NY), or equivalent.
 4. 5 mL pipette tips, 500 tips per case (Eppendorf® catalogue # 2235081-1, distributed by Brinkmann Instruments, Westbury NY), or equivalent.
 5. 12 Acid-cleaned volumetric flasks, 100-mL for standards preparation (polypropylene or polymethylpentene flasks preferred). To acid-wash flasks, rinse with 10% (v/v) reagent-grade nitric acid, followed by rigorous rinsing with 18 MΩ-cm water. Repeat this process several times depending on prior use of the containers.
 6. 2 Acid-cleaned 2 liter PE bottles. To acid-wash containers, rinse with 10% (v/v) reagent-grade nitric acid, followed by rigorous rinsing with 18 MΩ-cm water. Repeat this process several times depending on prior use of the containers.
 7. Eight acid-cleaned 1 liter PE bottles. To acid-wash containers, rinse with 10% (v/v) reagent-grade nitric acid, followed by rigorous rinsing with 18 MΩ-cm water. Repeat this process several times depending on prior use of the containers.
 8. Four acid-cleaned 500 mL PE bottles. To acid-wash containers, rinse with 10% (v/v) reagent-grade nitric acid, followed by rigorous rinsing with 18 MΩ-cm water. Repeat this process several times depending on prior use of the containers.
 9. Twenty-four acid-cleaned 250 mL PE bottles. To acid-wash containers, rinse with 10% (v/v) reagent-grade nitric acid, followed by rigorous rinsing with 18 MΩ-cm water. Repeat this process several times depending on prior use of the containers.
 10. 1.5 mL polypropylene (PP) microcentrifuge tubes (Eppendorf® catalogue # 2236380-8, distributed by Brinkmann Instruments, Westbury NY), or equivalent.
 11. 6 or more tube racks for 1.5 mL microcentrifuge tubes (Eppendorf® catalogue # 2236422-7, distributed by Brinkmann Instruments, Westbury NY), or equivalent.
 12. 6 or more vial rack for HPLC autosampler vials, 50-position, (catalogue C4012-25,

National Scientific Co., and phone 800-332-3331).

13. 5 or more flangless ferrules, "blue" for 1/16" O.D. tubing (UpChurch Scientific catalogue # P-200X, distributed by ChromTech, phone 800-822-5242) or equivalent.
14. 5 or more "FingerTight III" HPLC "Tefzel" fittings, 10-32 threading, for 1/16" O.D. tubing (UpChurch Scientific catalogue # F-300X, distributed by ChromTech, phone 800-822-5242) or equivalent.
15. Repeater pipetter tips, "Combitips Plus" 5 mL (Eppendorf® catalogue # 2226640-3, distributed by Brinkmann Instruments, Westbury NY), or equivalent.
16. HPLC tubing, 0.007" I.D. X 1/16" O.D., polyethylethylketone (PEEK), 5 feet length.
17. Tubing, 0.03" I.D. X 1/16" O.D., polypropylene (PP), 5 feet length.
18. Four "end-of-tubing" prefilters (10 µm) for each HPLC reservoir bottle, (UpChurch Scientific catalogue # A-438, distributed by ChromTech, phone 800-822-5242) or equivalent.
19. In-line HPLC post-pump filter (2 µm), (UpChurch Scientific catalogue # A-430, distributed by ChromTech, phone 800-822-5242) or equivalent.
20. 20 mL Luer fitting plastic syringe.
21. Kay-Dry™ paper towels and Kim-Wipe™ tissues (Kimberly-Clark Corp., Roswell GA, or equivalent vendor).
22. Teflon™-coated magnetic stir bars (2). (Catalog Number 58948-974 or equivalent), VWR Scientific Products, Buffalo Grove, IL.
23. Cotton swabs (Hardwood Products Co. ME, or equivalent vendor).
24. Nitrile, powder-free examination gloves (N-Dex®, Best Manufacturing Co., Menlo, GA, or equivalent vendor).
25. Biohazard autoclave bags (Curtin-Matheson Scientific, Inc., Florence, KY, or equivalent vendor).

7. INSTRUMENT SETUP AND CONFIGURATION

a. HPLC Hardware Setup

A PerkinElmer representative should perform the first installation of the Series 200™ HPLC system. If the instrument has been moved, laboratory personnel can assemble and configure the system according to the PerkinElmer supplied user manuals for the Series 200 LC Pump and the Series 200 Autosampler. The following should be considered in planning a new location:

1. Two 6-outlet A/C power strips rated for 15-amp duty will be required to plug-in all HPLC equipment and its associated components.
2. The HPLC equipment needs to be placed adjacent to the right side of the ICP-DRCMS instrument. Allow for 4 feet of bench space for the HPLC equipment and data processing computer. A bench height of 32–34 inches is best.
3. HPLC components need to be arranged, from left to right, in the following order: 1) eight-port switching valve, 2) column oven, and 3) pump with autosampler. Set the autosampler on top of the pump.
4. Replace the existing injection sample loop with a 20 µL loop.

5. Replace autosampler needle with one made of stainless steel (PerkinElmer P/N N293-0023), if it does not already have one. Titanium needles are unsuitable due to their potential to be a source of arsenic contamination. Refer to the PerkinElmer Series 200 LC Autosampler user manual for instructions on needle replacement.
6. Replace all stainless steel HPLC tubing following the HPLC pump's purge port with "yellow" PEEK tubing, 0.007" I.D. X 1/16" O.D. Use "yellow" PEEK tubing for the remainder of the fluid path. Keep tubing lengths short but allow for a small amount of "wiggle room".
7. Install a PEEK construction in-line filter (10 µm) between the HPLC pump and the autosampler.
8. Install a guard column in front of the analytical column inside of the column oven. Do not use the column oven's stainless steel tubing that acts to preheat the mobile phase before it enters the column. The preheating is unnecessary and the extra tubing length will not help the quality of the chromatography.
9. Attach via a plastic tie clamp (or equivalent) one end of a given length of ¼" diameter Tygon™ tubing to the end of the bench holding the HPLC equipment. Bring the other end of this Tygon™ tubing so it will empty into a large waste jug. Position this tubing close enough to the 6-port switching valve so that HPLC tubing of port #2, when it is not attached to the nebulizer, can be manually inserted into the Tygon™ tubing and HPLC effluent can be directed to waste.

b. Software Installation

The ELAN Instrument Control version 2.4 with Service Pack 2 should be already installed on the computer controlling the ELAN DRC II™. If it is not, contact a PerkinElmer service representative to get the latest version of the software.

It is preferable to install PerkinElmer's TotalChrom™ Workstation package on the same computer that contains the ELAN Instrument Control software*. It is advised that a PerkinElmer representative install and initially configure TotalChrom™. Alternatively, laboratory personnel can install and configure TotalChrom themselves by following instructions contained in *TotalChrom Workstation User's Guide*, or by getting help by calling PerkinElmer Technical Services. As part of installing TotalChrom™, create a folder named "hplc" on the root level of the C drive. Create the following subfolders inside the "hplc" folder: "methods", "data", "optimization", and "reports". Feel free to create additional subfolders as the need arises. This method assumes that version 6.2.0 of TotalChrom™ Workstation package is installed.

ChromLink™ 2.0 (PerkinElmer Instruments) is installed into its own program folder. The installation of ChromLink™ is quick and straightforward when using the supplied installation utility.

Additional software that should be installed on the same computer is pdfFactory Pro 1.52 (FinePrint Software, LLC). This software is used for creating electronic Portable Document Files (PDF). It is used like a printer in that documents are "printed" from the Microsoft®

* Raw signal versus time data is collected by the ELAN software and stored on ELAN controller computer's hard drive as a "NetCDF" file before it is read by the TotalChrom Workstation software. For the purposes of this arsenic speciation method, TotalChrom Workstation is used only for post-run data processing and is not used to operate the HPLC or the ELAN DRC.

Windows print dialog box, but instead of being printed on paper, the document appears on screen that can be viewed before either sending it to a printer for hardcopy or saving it on disk as a PDF file, or both. Because of the “trial and error” nature of solving chromatographic integration challenges, frequent reprocessing (and reprinting) may be required. In these instances, generating PDF documents becomes an indispensable tool.

c. Peristaltic Pump Setup

An external peristaltic pump offers a number of advantages over the peristaltic pump built into the ICP-DRC-MS. It can be started, stopped and its speed set independent of the ICP-DRC-MS control software. This “feature” is important when one considers that the HPLC pump “knows nothing” about the state of affairs beyond the HPLC system, and it will continue to pump mobile phase regardless of whether the spray chamber is being drained or not. Likewise, the built-in peristaltic pump is under ELAN software control only and cannot be operated in manual mode. While it is feasible to configure the ELAN software to force the built-in peristaltic pump to keep emptying the spray chamber after completing an analysis, it is nonetheless easy to make a mistake during the ELAN program setup. This is because the built-in pump’s timing and speed is set in the ELAN’s sample file and not the method file. Because the analyst needs to create the sample file each time before a batch run, there is a persistent danger that the built-in peristaltic pump’s timing and speed could be set up incorrectly or forgotten by the analyst. If this happens, the software will stop the built-in peristaltic pump well before the HPLC pump stops, causing the spray chamber to flood and the plasma to be extinguished by mobile phase. Worse, it is quite possible for the HPLC to pump mobile phase for 30 minutes or longer before it auto-stops, causing extensive flooding of the torch box and the ICP-DRC-MS. The end result will be liquid spillage inside the ICP-DRC-MS, and possibly, damage to the instrument electronics. The best solution to avoid flooding the torch and causing a run to abort is to use an external peristaltic pump. This is simply due to the fact that the only way to stop an external peristaltic pump (because it is not under instrument control) is to press the stop button on the pump itself.

1. Set up a 4-channel peristaltic pump (Gilson “Minipuls 3” or equivalent) on the ICP-DRC-MS spray chamber shelf just behind the spray chamber.
2. Do not connect the peristaltic pump to the control computer. Connect the pump to A/C power only. Run the pump in manual mode only.

d. Electrical Connections

Make the necessary electrical connections between specific I/O terminals of the HPLC autosampler, the pump, the ICP-DRC-MS, and the 6-port switching valve. The event I/O terminals are prominently labeled and are located on the right side of each instrument, with the exception of the 6-port switching valve where it is located on the back of this unit.

1. Between the HPLC pump and the autosampler, use two 12 inch long common telephone wires with RJ-11 connectors to connect:
 - (a) The HPLC pump’s terminal labeled “RDY” to the HPLC autosampler’s terminal labeled “RDY IN”, and
 - (b) The HPLC pump’s terminal labeled “EXT RUN” to the HPLC autosampler’s terminal labeled “INJ 1”.
2. Use the supplied cable (PerkinElmer P/N B3001203 or equivalent) to connect the Pump’s “RUN OUT” terminal to the ICP-DRC-MS’s “AUXILLARY I/O”.

Urine arsenic species HPLC/ICP/DR/CMS (Formerly Arsenic species in Urine)
NHANES 2007-2008

- Use the supplied cable (PerkinElmer P/N N2600418 or equivalent) to connect the Pump's "TE 1" terminal to the back of the 6-port electrically-activated switching valve's terminal block I/O.

e. Six-Port Switching Valve

The electrically activated 6-port switching valve's DIP switch needs to be configured upon initial installation. If the switching valve is not put into "pulse mode", the unit will not respond to the ~1 second contact closure from the PerkinElmer Series 200 HPLC autosampler. This only needs to be done once for a new unit. On the other hand, the settings of the front panel buttons should be checked before the start of each chromatographic run.

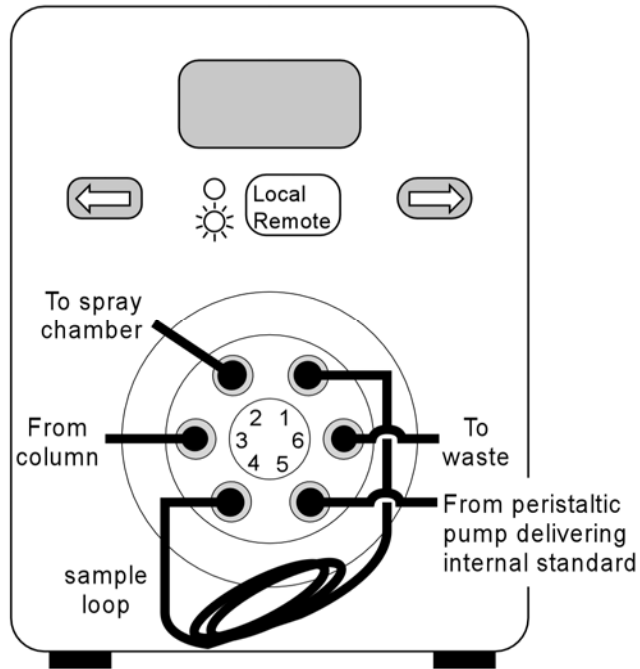
- Turn the EV750-100 6-port valve unit upside down and remove the 4 screws using a Philips head screwdriver. Remove the cover of a new EV750-100 6-port valve and look for DIP switch "SW3" on the printed circuit board. Use a small flat-head screw driver or the tip of a pen to adjust the position of each switch:

Rheodyne® EV750-100 DIP Switch "SW3"								
DIP switch #	1	2	3	4	5	6	7	8
Position	up	up	down	down	down	up	up	down

- Screw the cover back on the EV750-100. Connect the timed event wire leads that come from the "TE1" timed event output on the Series 200 HPLC pump to I/O junctions #4 and GND on the back of the EV750-100 (order of connection of colored wires does not matter).
- Position the EV750-100 close to and on the left side of the HPLC Series 200 Column Oven. Install a 200 µL sample loop between ports #1 and #4. Using the supplied HPLC pressure fittings, make the remaining HPLC tubing connections to the appropriate ports as described in TABLE 7-1.

TABLE 7-1: TUBING CONNECTIONS ON EV750-100				
Valve Port	Flow Direction		Tubing Description	Tubing Length
	From	To		
#1	Valve Port #1	Sample Loop	PEEK	-
#2	Valve Port #2	Nebulizer	HPLC tubing, 0.007" i.d., 1/16" O.D., "yellow" PEEK	30 cm
#3	Column	Valve Port #3	HPLC tubing, 0.007" i.d., 1/16" O.D., "yellow" PEEK	20 cm
#4	Sample Loop	Valve Port #4	PEEK	-
#5	Valve Port #5	Waste	PP or PFA Tubing, 0.03" i.d., 1/16" o.d.,	Length as needed
#6	Peristaltic Pump	Valve Port #6	PP or PFA Tubing, 0.03" i.d., 1/16" o.d.,	-50 cm

**EV750-100 6-port switching valve
(front)**



4. Plug-in the A/C power adapter to the back of the unit and into a regular 110V outlet. The EV750-100 will automatically come on and the one of the diode indicators will light up. Press the "Local/Remote" button on the front of the unit so that the top yellow indicator light is on. Press the left arrow button until the LCD display indicates "1". Press the "Local/Remote" button again so that the bottom green indicator light is now on.
5. The EV750-100 is ready for operation.

8. STANDARD PROCEDURE

a. Preparation of Stock Solutions

1. **0.5 M Ammonium Acetate, pH 5.** Dissolve 27.2 g of ammonium acetate and 8.0 mL of glacial acetic acid into approximately 950 mL of 18 M Ω -cm water. Adjust pH to 5.0 by adding concentrated glacial acetic acid drop-wise. Complete volume to 1000 mL with 18 M Ω -cm water. Mix thoroughly. Expires in 1 year. Prepare ahead of time or as needed.
2. **0.1 M Ammonium Acetate, pH 5.** Dissolve 5.44 g of ammonium acetate and 1.68 mL of concentrated glacial acetic acid into approximately 900 mL of 18 M Ω -cm water. Adjust pH to 5.0 using drop wise additions of either ammonium hydroxide or glacial acetic acid. Complete volume to 1000 mL with 18 M Ω -cm water. Mix thoroughly. Expires in 1 year. Prepare ahead of time or as needed.
3. **0.5 M Ammonium Carbonate.** Dissolve 48.05 g of ammonium carbonate into approximately 900 mL of 18 M Ω -cm water. Complete volume to 1000 mL with 18 M Ω -cm water. Mix thoroughly and filter. Expires in 1 year. Prepare ahead of time or as needed.
4. **0.5 M TRIS Buffer.** Dissolve 60.57 g of tris(hydroxymethyl)aminomethane in approximately 900 mL of 18 M Ω -cm water. Complete to 1000 mL with 18 M Ω -cm water. Expires in 1 year. Prepare ahead of time or as needed.
5. **0.5 M Ammonium Sulfate.** Dissolve 66.07 g of ammonium sulfate in approximately 900 mL of 18 M Ω -cm water. Complete to 1000 mL with 18 M Ω -cm water. Expires in 1 year. Prepare ahead of time or as needed.
6. **5% Acetonitrile.** To make autosampler rinse solution, add 50 mL of acetonitrile (HPLC or Spectrophotometer grade) to 950 mL of 18 M Ω -cm water. Mix. Expires in 1 year. Prepare ahead of time or as needed.

b. Preparation of Stock Standards (Concentrated)

CAUTION!

Arsenic compounds are toxic! Take extra care to avoid accidental ingestion or inhalation of these materials. **Wear appropriate personal protective gear. Above all, wear a laboratory coat and latex or nitrile gloves.** Clean up any spill that might occur according to applicable hazardous material spill procedures.

Prepare stock standards before day of analysis.

For the following weighings, use a high precision analytical balance capable of accurately weighing milligram amounts of material to the tenth of a milligram or better. **It is important to use the balance in a vibration-free room that is free of air drafts, and away from direct sun light, to the fullest extent possible. Handle each beaker using a clean pair of tongs, preferable those with rubber grips to improve handling characteristics.**

1. Record the weight of seven clean 20 mL beakers (or equivalent) to a precision of ± 0.1 mg or better. For each weighing, use a clean Teflon-coated spatula to place a small quantity of each arsenic species standard (within the range specified in the

Urine arsenic species HPLC/ICP-DRS (Formerly Arsenic species in Urine)
NHANES 2007-2008

table below) into a pre-labeled, tared beaker. In each case, record the weight of the beaker with solid standard to the nearest 0.1 mg (or better if the balance is capable of it). Record the subtracted tare weight of the beaker from total weight observed for each solid standard. Quantitatively transfer each standard to the appropriate volumetric flask and complete to volume according to TABLE 8-1.

TABLE 8-1: PREPARATION OF AS SPECIES FROM SOLID STANDARDS

Arsenic Species	Range to Weigh	Solvent Used to Dissolve	Final Volume After Dissolution
Arsenobetaine	0.02–0.03 g	Water (18 MΩ·cm)	10.00 mL
Arsenocholine bromide	0.20–0.25 g	Water (18 MΩ·cm)	50.00 mL
Disodium methyl arsenate	0.20–0.25 g	Water (18 MΩ·cm)	50.00 mL
Trimethylarsine oxide	0.20–0.25 g	Water (18 MΩ·cm)	100.0 mL
Dimethylarsinic acid	0.20–0.25 g	Water (18 MΩ·cm)	100.0 mL
Arsenic (V) oxide hydrate	0.20–0.25 g	Water (18 MΩ·cm)	100.0 mL
Arsenic (III) oxide	0.20–0.25 g	Dissolve in 3 ml of 6N HCl with mild heating. Add water (18 MΩ·cm) to complete volume	100.0 mL

2. Store flasks tightly capped until future use. Expiration date is 1 year.
3. Calculate the concentration of each arsenic species high concentration standard by dividing the tared weight in milligrams by its final volume in liters. The resulting units of concentration are grams per liter (g/L). Record these concentrations on the labels on the flasks.

c. Preparation of Stock Standards (Diluted)

Prepare ahead of time before the day of analysis.

1. Calculate the “Arsenic (As) atomic equivalent” concentration of each arsenic species concentrated standard using Equation 1:

Equation 1

$$\text{“As atom equivalent” conc. in mg/L} = \frac{\text{concentration of concentrated stock standard in mg/L} \times \text{\# As atoms per species molecule} \times 74.92 \text{ atomic wt. As}}{\text{F.W. of As species}}$$

2. Insert into the equation the appropriate values for the formula weights (F.W.) and number of arsenic atoms per molecule for each species from TABLE 8-2.

TABLE 8-2: FORMULA WEIGHTS OF ARSENIC SPECIES

Arsenic Species	Formula Weight	Number of Arsenic Atoms per Molecule	Formula
Arsenobetaine	178.06	1	(CH ₃) ₃ AsCH ₂ COOH
Arsenocholine bromide	244.99	1	(CH ₃) ₃ AsCH ₂ CH ₂ OH·Br
Disodium methyl arsenate	291.9	1	CH ₃ AsO ₃ · 6H ₂ O
Trimethylarsine oxide	136.03	1	(CH ₃) ₃ AsO
Dimethylarsinic acid	138.01	1	(CH ₃) ₂ As(OH) ₂
Arsenic (V) oxide hydrate	229.84	2	As ₂ O ₅ · xH ₂ O
Arsenic (III) oxide	197.84	2	As ₂ O ₃

- Record the “arsenic (As) atomic equivalent” concentration value on each high arsenic standard flask.

(1) Determination of Arsenic Purity for Arsenic Species Standards

- For each high arsenic standard, make a 200,000-fold dilution as follows:
 - Dilute 50.0 µL of high arsenic standard to 100 mL in a clean volumetric flask with 18 MΩ·cm water. Mix well.
 - In 15 mL test tubes, add 4.950 mL of 18 MΩ·cm water followed by 50.0 µL of the arsenic standard just diluted in (a) above. Mix well.
 - Submit each diluted arsenic standard for analysis for Total Arsenic (use DLS Method 160C/01-OD “Total Urine Arsenic” or an equivalent method).
- Use the total arsenic concentration results to calculate the arsenic purity for each arsenic species standard using Equation 2.

Equation 2

$$\% \text{ arsenic purity} = \frac{\text{reported total As concentration } \mu\text{g/L} \times 10^{-3} \text{ mg}/\mu\text{g} \times 200000}{\text{"As atom equivalent" concentration in mg/L}} \times 100\%$$

- Record the % purity of each high arsenic standard on the label on its flask. If the calculated purity comes out greater than 100% within analytical error (e.g. 102%), record “100%” for its purity.

(2) Dilution of Concentrated Arsenic Standards (adjustment for As purity)

- Prepare 5.00 mg/L diluted stock standard solutions by diluting a calculated volume of each standard in 100.0 mL of 18 MΩ·cm water. Use Equation 3 below, which takes into account arsenic purity, to calculate the volume to pipet of each arsenic species standard.

Equation 3

$$\text{mL to pipet} = \frac{100 \text{ mL} \times 5 \text{ mg/L}}{\text{"As atom equivalent" concentration in mg/L}} \times \frac{100\%}{\% \text{ arsenic purity}}$$

- Complete the dilutions in 100 volumetric flasks then transfer to clean, PP screw-top bottles for storage. Add to the labels of these “middle

concentration" stock standard solutions the following text: "As atom equivalent conc. = 5000 µg/L". Also add the expiration date as being six months from the date of preparation.

d. Preparation of Concentrated Stock Internal Standard

Prepare ahead of time before the day of analysis.

1. Prepare concentrated Stock Internal Standard, 50 mg/L trimethylarsine oxide (TMAO). Dilute a calculated volume (µL) of trimethylarsine oxide (TMAO) stock standard in 18 MΩ-cm water to make a total volume of 20 mL. Calculate the number of µL of stock TMAO standard to add using Equation 4:

Equation 4

$$\begin{array}{l} \mu\text{L of stock TMAO} \\ \text{standard to add} \end{array} = \frac{50 \text{ ppm} \times 20 \text{ mL} \times 1000 \mu\text{L/mL}}{\text{actual ppm of stock TMAO standard}}$$

e. Preparation of Quality Control Material

Collect human urine from anonymous donors in clean, trace metals-free urine cups. Refrigerate urine donations at ≤ 4°C as soon as possible for periods of 2 days or less. For longer periods, freeze the urine donations until needed. Assay each donation for, if possible, speciated arsenic or, alternatively, for total arsenic. Assign urine donations to a "low" pool or to a "high" pool according to whether its arsenic concentration exceeds a predetermined threshold value (i.e., 15 µg/L). Do not pool urine donations with an arsenic concentration that exceeds the threshold by more than a factor of 10. After pooling urine donations into their respective pools, clarify each pool by centrifugation in acid-washed 250 mL centrifuge bottles (30 minutes at 4000 rpm in a preparative table-top centrifuge). Pour off the supernatant and dispose of the pellets. To each pool, add a calculated volume of the chosen arsenic species standard solution to raise the concentration of that arsenic species to the desired value. While maintaining constant stirring of each pool, aliquot 0.5 mL of urine into a sufficient number of pre-labeled 2 mL vials to provide QC material for 1000 or more runs. Store aliquoted QC material at >80°C.

f. Preparation of Matrix-Matched Material ("Base Urine")

Collect human urine from anonymous donors following the same collection procedure used for preparation of QC material. Assay each donation for, if possible, speciated arsenic or, alternatively, for total arsenic. Exclude urine donations that exceed 10 µg/L for each arsenic species or 25 µg/L total arsenic. Pool a sufficient number of urine donations to make a volume greater than 2 liters. Divide the pool into 40 mL aliquots and save at -20°C in 50 mL centrifuge tubes labeled "Base Urine – Speciated Arsenic".

g. Preparation of Working Solutions

1. **25% (v/v) Base Urine Pool in 0.075 M Ammonium Acetate, pH 5.** May be prepared ahead of time before the day of analysis. Add 30 mL of 0.5 M ammonium acetate pH 5 to a clean 250 mL PP bottle. Add 50 mL of "Base Urine – Speciated Arsenic". Add 120 mL of 18 MΩ-cm water. Mix thoroughly. Prepare as needed. Store refrigerated at 4°C. Expiration date is 1 day.
2. **HPLC Buffer A Preparation.** May be prepared ahead of time before the day of

analysis. To a clean 2 liter or greater capacity beaker containing a clean magnetic stir bar, add approximately 1.9 L of 18 M Ω -cm water (\geq 18 M Ω -cm). Add 40.0 mL of 0.50 M ammonium carbonate and 40.0 mL of 0.5 M TRIS buffer. Measure temperature of the solution and adjust the temperature compensation setting on the pH meter to match the solution temperature. Be sure solution is being mixed on a magnetic stir plate. Using a hydrogen glass electrode (pH probe), monitor pH while slowly adding glacial acetic acid drop wise to bring pH to 8.70 ± 0.05 . In this case, an Eppendorf® Repeater Pipetter fitted with a 500 μ L syringe tip works well for adjusting pH. After complete mixing, transfer beaker's contents to a 2 L graduated cylinder and add 18 M Ω -cm water to complete volume to 2000 mL. Transfer entire contents to HPLC "Bottle A", cap and mix. Prepare as needed. Expiration date is 1 month.

3. **HPLC Buffer B Preparation.** May be prepared ahead of time before the day of analysis. To a clean 2 liter or greater capacity beaker containing a clean magnetic stir bar, add approximately 1.9 L of 18 M Ω -cm water (\geq 18 M Ω -cm). Add 80.0 mL of 0.50 M ammonium sulfate. Measure temperature of the solution and adjust the temperature compensation setting on the pH meter to match the solution temperature. Be sure solution is being mixed on a magnetic stir plate. Using a hydrogen glass electrode (pH probe), monitor pH while slowly adding 10% ammonium hydroxide drop wise to bring pH to 7.0 ± 0.1 . After complete mixing, transfer beaker's contents to a 2 L graduated cylinder and add 18 M Ω -cm water to complete volume to 2000 mL. Transfer entire contents to HPLC "Bottle B", cap and mix. Prepare as needed. Expiration date is 1 month.
4. **HPLC Buffer C Preparation.** 18 M Ω -cm water. Prepare as needed. Expiration date is 1 year.
5. **HPLC Buffer D Preparation.** 5% (v/v) acetonitrile (HPLC grade) in 18 M Ω -cm water. Prepare as needed. Expiration date is 1 year.
6. **Internal Standard Preparation.** May be prepared ahead of time before the day of analysis. To an empty 1 liter PP bottle labeled "Internal Standard", add 1000 mL of 18 M Ω -cm water. Next, add 50 μ L of 50 mg/L trimethylarsine oxide (TMAO Internal Standard Stock Solution). Mix well. Final concentration is 2.5 μ g/L TMAO. Prepare as needed. Expiration date is 1 year.

h. Preparation of Working Calibrators

(1) Preparation of Intermediate "Mixed Species" Calibration Solutions

Prepare the intermediate mixed species calibration solutions on the day of analysis.

1. Add 7.5 mL of 0.5 M ammonium acetate pH 5 to a clean 50 mL volumetric flask (you may reuse a dedicated flask for this purpose) labeled "Mixed As Species 250 μ g/L" or something similar. Likewise, add 7.5 mL of ammonium acetate pH 5 to another dedicated 50 mL volumetric flask labeled "TMAO 250 μ g/L".
2. To each flask, add 12.5 mL of Base Urine (see Preparation of Matrix-Matched Material ("Base Urine"), *page 18*).
3. To the flask labeled "Mixed As Species 250 μ g/L", add 2.50 mL of each of the following 5000 μ g/L diluted stock solutions of arsenic species: AC, AB, DMA, MMA, As(III) and As(V) (six solutions in all).
4. To the flask labeled "TMAO 250 μ g/L", add 2.50 mL of 5000 μ g/L TMAO.
5. Complete volumes for both flasks to 50.0 mL using 18 M Ω -cm water. Mix contents thoroughly. Transfer to appropriately labeled 50 mL screw-top tubes

or equivalent. Expires in 8 hours unless frozen.

(2) Preparation of Working Calibrator Series

Prepare the working calibration series on the day of analysis.

1. Label five clean 15 mL PP screw-top Falcon® (or equivalent) tubes with caps on as follows: "Mix S0", "Mix S1", "Mix S2", "Mix S3", "Mix S4", "Mix S5", "Mix S6" and "Mix S7". Likewise, label an additional five 15 mL PP screw-top tubes as follows: "TMAO T0", "TMAO T1", "TMAO T2", "TMAO T3", "TMAO T4", "TMAO T5", "TMAO T6" and "TMAO T7". Arrange these in the increasing order and place in a test tube rack.

As an option, you may limit the number of calibrators by leaving out the S5 through S7 and the T5 through T7 calibrators. This will reduce the total number of calibrators to ten (5 "S" + 5 "T" series calibrators) and limit the upper calibration range to 150 µg As/L. This approach may be more appropriate if the concentration range of arsenic species in unknown samples is anticipated to mostly fall within this limited calibration range. Simply perform steps 2 through 9 below but leave out the S5 through S7 and T5 through T7 calibrators. Obtain the approval of a supervisor before adopting this option.

2. Set up a DigiFlex Dilutor/Dispenser with a clean 10 mL dispensing syringe and a clean 2 mL sample syringe. Place the tubing that will draw diluent to the dilution syringe into a buffered solution consisting of 25% Base Urine in 0.075 M ammonium acetate pH 5. Place a waste beaker in position to collect the effluent liquid from the tip of the sample/dispense tubing. Next, thoroughly rinse the liquid path by pressing the "Prime" button on the DigiFlex and allow the syringes to cycle 3 to 4 times before stopping the prime function with a press of the "Start/Stop" button.
3. To make the "S0" calibrator, set the diluent syringe volume to "9999" and the sample syringe volume to "0". Press the "Start/Stop" button once to draw 10 mL of diluent solution (25% urine in 0.075 M ammonium acetate pH 5) into the diluent syringe then press again to dispense 10 mL to the "Mix S0" tube.
4. To make the calibrator levels "S1" to "S6", set the diluent syringe volume to the appropriate values indicated in TABLE 8-3 for the diluent and sample syringe volumes. Submerge the tip of the DigiFlex™ sample/dispense tubing in the "Mixed As Species 250 µg/L" intermediate solution and press the "Start/Stop" button on the DigiFlex. A volume in µL (indicated in the appropriate row in the third column of TABLE 8-3) will be aspirated. Place the appropriately labeled receiving tube ("S1", "S2"..."S6") under the sample/dispense tubing and press the "Start/Stop" button. The indicated volume of diluent and sample will be dispensed to make a total volume of 10 mL of diluted calibrator in the tube. If necessary, repeat the dispense step into the same tube the required number of times (indicated in fourth column in TABLE 8-3) to make a total dispensed volume equal to 10 mL.

TABLE 8-3: DIGIFLEX SETTINGS FOR MAKING DILUTED SERIES

Calibrator Level	DigiFlex Volume Setting, μL		No. of Times to Dispense to Same Tube*	Target Arsenic Concentration (Nominal Conc. entered into HPLC software)	
	Diluent Syringe	Sample Syringe			
S0 / T0	9999	0	1	0	(0)
S1 / T1	9980	20	1	0.50	(2)
S2 / T2	9900	100	1	2.50	(10)
S3 / T3	9500	500	1	12.5	(50)
S4 / T4	8500	1500	1	37.5	(150)
S5 / T5	3750	1250	2	62.5	(250)
S6 / T6	1250	1250	4	125.0	(500)
S7 / T7	No dilution required. Add 10 mL of master mix solutions "Mixed As Species 250 $\mu\text{g/L}$ " or "TMAO 250 $\mu\text{g/L}$ " to tube "S7" or "T7".				

* To achieve a final volume of 10 mL.

5. To make calibrator level "S7", simply pipet 10 mL of master mix solution "Mixed As Species 250 $\mu\text{g/L}$ " into the tube labeled "Mix S7".
6. Repeat the preceding step for each calibrator level indicated in TABLE 8-3. Between calibrators, rinse the tip of the sample/dispense tubing with 18 M Ω -cm water from a squeeze bottle.
7. Repeat the previous two steps, this time using "TMAO 250 $\mu\text{g/L}$ " to make "T0" through "T7".
8. Cap all tubes. Mix them thoroughly by vortexing or inverting 5 to 6 times.
9. Divide each calibrator into twenty (or less) 0.5 mL aliquots contained in correspondingly labeled clean HPLC autosampler vials. Cap with "snap-cap" septum caps. Store at $\leq -70^{\circ}\text{C}$. Expires in 3 months.
10. At a later date, thaw one set of calibrators (S0 – S7 and T0 – T7) as needed for future calibrations.

i. Processing of Urine Samples and QC Material

Process a chosen number of urine samples and QC material on the day of analysis. One run is defined as the analysis of a contiguous set of samples (typically 20) bracketed by bench QC material at the beginning and end of the set. Each bench QC level needs to be analyzed at the beginning and end of a run in separate tubes/vials. I.e. *sharing of even a single QC tube or vial for more than a one QC determination is disallowed*. It is permissible to "piggyback" two runs in succession following a single calibration done during a single autosampler load (such as for an overnight analysis), as long as each run of samples is bracketed by their own uniquely co-prepared bench QC material.

1. Identify, gather and thaw the necessary specimen tubes containing the urine samples for the batch ("run") to be analyzed.
2. Likewise, for each batch run, thaw one tube each of low and high bench QC samples "LU-yyxxx" and "HU-yyxxx" (for explanation of nomenclature, see *Quality Control*

Material above).

3. Label the required number of Eppendorf® (or equivalent) 1.5 mL microcentrifuge tubes corresponding to the samples and bench QC samples to be run. Label a pair of microcentrifuge tubes for each bench QC, since each bench QC will be injected at the beginning and end of each batch run and need to be contained in separate tubes. Likewise label an equal number of HPLC autosampler vials and set these aside for later use. It is helpful to use preprinted barcode labels to improve efficiency and reduce the chance of labeling errors.
4. To each microcentrifuge tube, add 600.0 µL of 0.1 M ammonium acetate pH 5.

CAUTION!

Work with open vials or tubes containing biological samples in a biological safety cabinet (BSC). Wear appropriate personal protective equipment (gloves, lab coat and safety glasses).

5. Pipet 200.0 µL of each sample and bench QC to their appropriately labeled microcentrifuge tube. Cap each tube and vortex 3-5 seconds.
6. Centrifuge microcentrifuge tubes for 2 minutes at $\geq 16,000$ rpm in a refrigerated centrifuge pre-cooled to $\leq 5^{\circ}\text{C}$.
7. Following centrifugation, transfer approximately 0.5 mL of the supernatant to the appropriately pre-labeled HPLC autosampler vials. Be careful not to disturb any pellet that might be present at the bottom of the microcentrifuge tube during transfer.
8. Cap all autosampler vials with the proper fitting "snap-cap" septum caps.
9. Transfer 0.5 mL of each of the calibrators to their respectively labeled autosampler vials: "S0", "S1", "S2", "S3", "S4", "S5", "S6" and "S7", and "T0", "T1", "T2", "T3", "T4", "T5", "T6" and "T7". Cap with "snap-cap" septum caps.
10. To six autosampler vials labeled "Bk"; transfer 0.5 mL of "S0" or "T0".
11. To an autosampler vial labeled "EQ", combine ~0.25 mL of the excess low bench QC and high bench QC leftover from step 7 above. Mix and cap. This is used for instrument equilibration and conditioning only.
12. If barcode labels have been affixed to the vials, at the appropriate time, use the barcode scanner attached to the instrument computer to scan the sample ID from the barcode label on each sample and QC vial before placing it into position in HPLC autosampler tray.

j. HPLC Instrument Setup

To improve work flow, instrument setup described in this section may be done before the day of analysis.

(1) Programming the HPLC Pump Methods

1. On the PerkinElmer Series 200 Pump control panel, press the Quit button to bring the pump controller to the starting screen.
2. If the method number for the correct stored pump program is known, that method can be called up into active memory. Press the function key F6 (labeled as "DIR" on screen). The screen changes and presents a table with column headers "Method", "Name" and "Last Modified". Press function key F4 ("RCL") and you will be prompted to enter a 2-digit number. Press the number for the correct method (e.g., "1") followed by the "enter" key. The

stored method will be loaded into memory and becomes the active pump program. The method can be inspected by pressing the function key F2 (“PUMP”) and using the up or down arrow keys to scroll the program steps.

3. If the correct pump program cannot be found, then the pump program will have to be reentered. To do this, execute the following steps:
 4. Press the Quit button, then the function key F6 (labeled as “DIR” on screen). The screen changes and presents a table with column headers “Method”, “Name” and “Last Modified”. Press function key F4 (“RCL”) and you will be prompted to enter a 2-digit number. Press “0” followed by the “enter” key. The “DEFAULT” method will now be loaded.
- (a) Press the function key F2 (“PUMP”). A new screen presents a table with column headers “Step”, “Time”, “Flow”, “%A”, “%B”, “%C”, “%D” and “Curve”. The default method has only one line, Step “0”, with the “>” marker just left of it. The highlight data field is “Time” and contains “10.0”. Press 6.5 on the keypad followed by right arrow key. The number 6.5 will replace the previous number and the highlight will advance right to the next field “Flow”. Press 1 then the right arrow key. The next field is “%A”, enter 100 then press the right arrow key. Repeat this for fields “%B”, “%C” and “%D”, entering 0. Pressing the right arrow key again will return you to “Time”.
- (b) Press the “insert” key on the pump controller keypad. A new step is added, Step “1” that is a replicate of the step before it. Input the data indicated in the table below. Notice that the last column “CURV” in step 1 calls for the input of a number. Likewise, create Step “2”, using the data from the table below. Note that you can move back and forth between fields, and up and down from one step to another, by using the left, right, up and down arrow keys on the keypad.

TABLE 8-4: HPLC PUMP PROGRAM SETTINGS

STEP	TIME	FLOW	%A	%B	%C	%D	CURV
0	6.5	1.00	100	0.0	0.0	0.0	
1	5.0	1.00	0.0	100	0.0	0.0	2.0
2	6.5	1.00	0.0	100	0.0	0.0	

- (i) Press the function key F6 (“STOR”). You will be prompted to enter a method number, press 1 then the “enter” key. If message comes up asking if you want to overwrite the existing method stored at that location, press the 1 key for “Yes”. Next you will be prompted to name the method, press the 0 key for “No”. (You may enter “Yes” and create a name for the method but this is optional).
- (ii) Press the function key F3 (“T.E.”). This is for entering timed events. Since an electrical-activated external switching valve is going to be used, the timing of brief ~1 second contact closures needs to be programmed.

EVENT	TIME	T.E.1	T.E.2
1	0.5	YES	-
2	1.0	YES	-

- (iii) Enter the parameters from the above table using the same technique as was used to create the pump method. Note that to successfully input the minutes for each event, you need to press “enter” after the inputting the number, instead of using the right arrow key. Timed Event #1 (“T.E.1”) is turned on by pressing 1 (“Yes”) on the keypad. Store a “ready” time (the number of minutes the pump waits during re-equilibration before allowing the next injection) by pressing function key F8 (“RDY”) and input 30 followed by the “enter” key. Press function key F6 (“STOR”) and respond to the prompt for a method number by inputting the same method number (e.g., “1”) used to store the pump program. Respond to the next two prompts with a “yes” then a “no”.
5. Press the function key F4 (“PRESS”). Press function key F4 (“MAX”) then input 3000 followed by the “enter” key. Press function key F3 (“MIN”) then input 100 followed by the “enter” key. Press function key F6 (“STOR”) and respond to the prompt for a method number by inputting the same method number used to store the pump program. Respond to the next two prompts with a “yes” then a “no”.
6. Create a separate HPLC pump method (e.g. method “19”) which will serve as a column wash method after the completion of a batch run:
- (a) Follow steps 2 through 5 above, except input the following in TABLE 8-5:

TABLE 8-5: HPLC PUMP COLUMN WASH PROGRAM

STEP	TIME	FLOW	%A	%B	%C	%D	CURV
0	0	1.00	100	0.0	0.0	0.0	
1	20	1.00	0.0	0.0	0.0	100	0
2	HALT	0	-	-	-	-	

- (b) No Timed Events need to be programmed.
7. Store this method using a number of your choosing (e.g. “19”).
8. To link the pump methods into a sequence, do the following:
- (a) Press softkey F5 (“SEQ”) on the HPLC pump. Press F8 (“DELS”) to clear any preexisting sequence. The following fields will be shown: “SET”, “METHOD”, “FIRST”, “LAST” and “INJ”. The “METHOD” field will be active highlighted field.
- (b) Input 1 then press the “enter” key. The next highlighted field will be “FIRST”; input 100 then press the “enter” key. The “LAST” field will automatically change to 100. Press the “enter” key again. The last field “INJ” will now be highlighted; input 5 then press the “enter” key.
- (c) A second line for set 2 will automatically be created. Press the “enter” key to advance to the “FIRST” field and input 1 followed by the “enter” key. In the “LAST” field, enter the number of samples to be analyzed. If you do not yet know this number, leave the default number alone (it can be changed later). Advance to the “INJ” field by pressing the “enter” key and input 1 followed by the “enter” key.
- (d) A third line for set 3 will automatically be created. Change the “METHOD” field to a value corresponding to the method number for the “column wash” pump method (e.g., 19), then change the “FIRST” and “LAST” fields to 99. Leave the “INJ” field set to 1.

- (e) Do not press the softkey F6 ("LINK"). This will be done later before the start of a batch run.

9. The HPLC pump is now programmed.

(2) Programming the HPLC Autosampler

1. On the Series 200 Autosampler, press the "quit" key. This brings up the "READY" screen. Next, press function key F6 ("DIR") to show the method names directory. Press function key F4 ("RCL") and input 0 followed by the "enter" key. Answer the next prompt with "yes" and you will be returned to the starting screen.
2. Press function key F2 ("METH"). A new screen presents a table with column headers "First", "Last", "Volume", "Replicates" and "Time". The highlight data field is "First" and contains "1". Key in "100". Complete the entry by pressing the "enter" key. It will automatically advance the highlight to the data field is "Last" and it will already contains "100". Since this method will make only make injections from position "100", just press "enter". The next highlighted field is now "VOLUME". Input a volume that is 2.5X the size of the autosampler's injection loop. For instance, if the autosampler's injection valve has a 20 μ L loop installed input 50 for "VOLUME". Enter 5 for "REPLICATES". This is because this method is for making five replicate injections from vial in position 100. Leave the default value for "TIME" unchanged, since it does not have any effect anyhow. Press the function key F6 ("STOR"), key in "1" then "enter". Respond to the next two prompts with a "yes" then a "no".
3. To program the second method, it is not necessary to exit the existing one. Since the method just programmed was stored, you can edit the existing method in memory and save it to a different location. Using the arrow keys on the autosampler panel, highlight data field "FIRST" which will contain "100". Input the starting vial position from which the autosampler is to make its first injection, which is usually "1". Press the "enter" key. Enter the number for the last vial position for this sample set, and then press the "enter" key. The highlighted field is "VOLUME" which is still the volume programmed for Method 1. Let it alone; instead press the "enter" key to advance to "REPLICATES". Replace the existing number by keying in 1. Press "enter". Leave the default value for "TIME" unchanged. Press the function key F6 ("STOR"), key in 2 then "enter". Respond to the next two prompts with a "yes" then a "no".
4. Program a third method that will be used in conjunction with the column wash pump program. This method will do an injection for a blank or empty vial in autosampler tray position 99. Set "First" and "Last" vial position fields to "99". Set the "Replicate" field to "1". While the "Volume" field can be set to any value, the value "1" is preferred. Press the function key F6 ("STOR"), key in a number of your choosing (e.g., "19") then press "enter". Respond to the next two prompts with a "yes". Input a name for this method (i.e., "WASH") then press "enter".
5. At the "READY" screen, press function key F5 ("SEQ"). Press F8 ("DELS") to delete previous sequences, if present. Three columns will be shown: "SET", "METHOD", and "INJECTIONS". The "METHOD" column will be highlighted, key in 1 followed by the "enter" key. The table will automatically create and jump to a line for set 2. Enter 2 then press "enter". You will again be prompted to enter a method number, this time for set 3. Enter 3 then press "enter". You will be prompted to enter a fourth set, however, leave that one alone unless there needs to be more than three methods to link together.

You can scroll the sets by using the up and down arrow keys. If you inadvertently created too many sets, position the ">" symbol to point at the unwanted set and press the "delete" key. The "INJECTIONS" column, which shows the number of injections programmed for each method, cannot be edited.

6. Link the methods together by pressing the F6 function key ("LINK").
7. The HPLC autosampler is now programmed.

k. ICP-DRC-MS Instrument Setup

To improve workflow, do the programming steps described in this section before the day of analysis.

(1) Programming the DRC Gas Flow Delay Parameter

A special ELAN[®] DRC[™] setting, called "Flow Delay", needs to be changed from its default setting to avoid the problem of the ELAN software, when it is in DRC mode, forcing a time delay of several seconds before collecting data at the start of a chromatographic run. This setting can only be changed by entering the ELAN software's Service Mode. This change only needs to be done once per software installation or upgrade, or if the setting was deliberately changed by a field service engineer. It is a good idea to inform the service engineer who intends to perform work on the instrument of the importance of returning the "Flow Delay" to the non-default value of 1.

Important!

While in Service Mode, **DO NOT make changes** to any setting except for the one change described below.

1. From within the ELAN program and in the window entitled "Instrument Control Session", choose menu item Options > Service Mode. You will be prompted to enter a Service Mode password. Enter the password "Elan6000" (omit the quotes and pay attention to capitalization) and click OK. If this password is not accepted, you will have to contact a supervisor or a PerkinElmer service technician.
2. You will be presented with a new tab called "Service" within the Instrument window. Maximize the window. At the bottom will be a row of tabs, click on "Gas". Look for the parameter called "Flow Delay (Gas changes while in DRC Mode)". If its setting is a value other than "1", click on the "Set Pauses..." button. Change the value in the field named "Flow Change" to 1. Click the "Apply" button then click the "Close" button. Choose menu item Options > Exit Service Mode.

(2) Programming the ELAN ".mth" file

1. If it is not already open, launch the ELAN program and in the window entitled "Instrument Control Session", choose menu item File > Review Files. Click the "Load" button for "Method", the first item on the list. Navigate to the folder "C:\elandata\Method" and click on "As_HPLC-1_drc.mth" file then click the "Open" button.
2. If the "As_HPLC-1_drc.mth" file cannot be found, or it has been changed or corrupted in a manner that makes its use questionable, then cancel the open

file dialog box and close the Review Files window by clicking the “Done” button. Do the following steps; otherwise, proceed to step 3:

- (a) Make the active method file the active window (do this by clicking on the tool bar icon that looks like a notepad with a “Cu” on it). Then click File > New on the menu bar and then choose “Data Only” in the New Method window that appears. Click OK then maximize the window. Complete this window with the information in the table below:

TABLE 8-6: ELAN[®] TIMING PARAMETERS

Parameter	Setting
Sweeps/Reading:	1
Readings/Replicate:	720
Number of Replicates:	1
Tuning File:	C:\elandata\Tuning\default.tun
Optimization File:	C:\elandata\Optimization\as_hplc_drc.dac
Enable Short Settling Time:	Unchecked

- (b) On the first line of the worksheet-like table, click in the cell of row 1 of the “Analyte (*)” column. Type “As” then the enter key. The row will suddenly be filled-in with arsenic’s “Begin Mass (amu)” of 74.92 (or something close) and several default parameters. Tab to next cells and fill in the information shown in TABLE 8-7 and TABLE 7-1.

TABLE 8-7: ELAN[®] ANALYTE PARAMETERS

Parameter	Setting
Analyte:	As
Begin Mass (amu):	74.9216 (or something close will be automatically entered by software)
End Mass:	<leave empty>
Scan Mode:	Peak Hopping
MCA Channels:	1
Dwell Time:	1000
Integration Time:	720000 (automatically determined by software)

- (c) Click on the “Processing” tab and enter the following information:

TABLE 8-8: ELAN® PROCESSING PARAMETERS

Parameter	Setting
Detector:	Pulse
Measurement Unit:	Cps
Process Spectral Peak:	Average
Process Signal Profile:	Average
Apply Smoothing:	Checked
Factor:	5
Auto Lens:	Off
Isotope Ratio Mode:	Off

(d) Skip the “Equation” tab. Click on “Sampling” tab and enter the following information:

TABLE 8-9: ELAN® SAMPLING PARAMETERS

Parameter	Setting
Peristaltic Pump Under Computer Control:	Unchecked
Sampling:	External

(e) Click on the “Report” tab and enter for following information:

TABLE 8-10: ELAN® REPORT PARAMETERS

Parameter	Setting
Report View Send to Printer:	Unchecked
Report Options Template:	<leave empty> *
Automatically Generate NetCDF File:	C:\elandata\reportoutput\
Report to File Send to File:	Unchecked
Report Options Template:	<leave empty> *
Report File Name:	<leave empty> *
Report Format:	<leave empty> *
File Write Option	<leave empty> *

* Content of these fields is not important since Send To Printer/File is unchecked.

(f) Choose menu item File > Save As and navigate to “C:\elandata\Methods\” folder. Enter “As_HPLC-1_drc.mth” as the name of the method file and click the “Save” button.

3. The ELAN method “As_HPLC-1_drc.mth” is now loaded into memory.

(3) Programming the ELAN “.dac” file

1. If it is not already open, launch the ELAN program and in the window entitled “Instrument Control Session”, choose menu item File > Review Files. Click the “Load” button for “Optimization”, the sixth item on the list. Navigate to the

folder "C:\elandata\Optimize" and click on "As_HPLC_drc.dac" file then click the "Open" button.

2. If the "As_HPLC_drc.dac" file cannot be found, or it has been changed or corrupted in a manner that makes its use questionable, then cancel the open file dialog box and close the Review Files window by clicking the "Done" button. Do the following steps; otherwise, proceed to step 3:
 - (a) Make the active method file the active window (do this by clicking on the tool bar icon that looks like a peak with a red arrow on crest of it). Then click File > Open on the menu bar navigate to the folder "C:\elandata\optimize\". Click on the most current "default.dac" file then click the OK button. Complete just the "Current Value" column with the information in TABLE 8-11.

TABLE 8-11: ELAN[®] OPTIMIZATION PARAMETERS

Parameter	Setting	Parameter	Setting
Nebulizer Gas Flow (NEB):	0.9*	Cell Path Voltage Std	- 16*
Auxiliary Gas Flow:	1.2	Rpa	0
Plasma Gas Flow:	15	Rpq	0.6
Lens Voltage:	7.5	Cell Gas A	0.2
ICP RF Power:	1450	Cell Gas B	0
Analog Stage Voltage:	- 1750*	DRC Mode NEB	0.9*†
Pulse Stage Voltage:	1000*	DRC Mode QRO	- 10.5
Quadrupole Rod Offset Std	0*	DRC Mode CRO	- 2
Cell Rode Offset Std	- 8*	DRC Mode CPV	- 15
Discriminator Threshold	70		

*Suggested starting values only. Optimum parameters will depend on outcome of the optimization procedure (see *ICP-DRC-MS Warm Up and Performance Check*).

†This should match the Nebulizer Gas Flow (NEB).

- (b) Choose menu item File > Save As in the "ELAN Instrument Control Session" window menu bar and navigate to "C:\elandata\Optimization\" folder. Enter "As_HPLC_drc.dac" as the name of the optimization file and click the "Save" button.

3. The ELAN method "As_HPLC_drc.dac" is now loaded into memory.

(4) Creating the ELAN Sample Table ".sam" file

1. If it is not already open, launch the ELAN program and in the window entitled "Instrument Control Session", choose menu item File > Review Files. Click the "New" button for "Dataset", the second item on the list. Navigate to the folder "C:\hplc\data\" and enter the file name "As<yymmdd>" (where yy = last 2 digits of current year, mm = this month, and dd = date of run, for example, As030201 denotes Arsenic Speciation run Feb 1, 2003) then click the "Open" button. The new dataset folder has been created and is now active. Click on the "DONE" button in >Review Files Window.
2. Clicking on the tool bar icon that looks like three Erlenmeyer flasks. Then choose File > New on the menu bar. A new window will appear entitled "Samples – [Untitled]". Click the "Batch" tab then click on the "Sample Template..." button. A dialog box entitled "Sample Template Data" will appear. Enter the following information:

TABLE 8-12: SAMPLE TEMPLATE DATA

Parameter	Setting
Sample ID Prefix:	1
Sample ID Number:	101
Sample ID Suffix:	_ <a single underscore character>
Increment:	1
Autosampler Position – Number:	100
Autosampler Position – Increment:	0
Range – Start Row:	1
Range – End Row:	5

Click the “Generate” button.

- Again, click on the “Sample Template...” button. The same dialog box entitled “Sample Template Data” will appear. Enter this information:

TABLE 8-13: SAMPLE TEMPLATE DATA

Parameter	Setting
Sample ID Prefix:	<empty>
Sample ID Number:	001
Sample ID Suffix:	_ <a single underscore character>
Increment:	1
Autosampler Position – Number:	1
Autosampler Position – Increment:	1
Range – Start Row:	6
Range – End Row:	105

Click the “Generate” button.

- Scroll the sample table to the right using the horizontal scroll bar until the columns “Sample Flush” through to “Wash Speed” is showing. Highlight the cell in the first row of the “Sample Flush” column. Enter “0” then tab to the next cell to the right, enter “0” again, tab again...i.e. enter “0” for all cells in the first row of columns “Sample Flush” through “Wash Speed”. Next, click on the column header for “Sample Flush” to select the entire column and drag right to select all the columns right of and including the “Sample Flush” column. While these six columns are highlighted (i.e. darkened), go to the menu bar and choose Edit > Fill Down. Zeros will fill down to replace every value with a zero. Scroll left to the first leftmost cell and click on it to select it.
- From the menu bar, choose File > Save As and save the file in the directory “C:\hplc\data\” using the name “As<yyymmdd>.sam” (where yy = last 2 digits of current year, mm = this month, and dd = date of run).
- It is a good idea to save a copy of this file as a template, thereby avoiding the need to re-create it every time.

I. ICP-DRC-MS Warm Up and Performance Check

1. Perform a pre-ignition check of the ICP-DRC-MS according to PE recommendations (See PE Manual "..."). Check the external peristaltic pump's tubing for signs of wear which will be evident by flattening of the tubing and pinch-roller marks. Excessively worn tubing should be replaced. Set up the peristaltic pump by installing the larger diameter ("white-black") peristaltic tubing on the bottom channel (orientation does not matter), and small ("black-black") peristaltic tubing on the top channel. Connect the left end of the "white-black" to the tygon "waste line" that leads to the large liquid waste carboy jug. Connect the right end of the "white-black" to the tubing that empties the ICP-DRC-MS's spray chamber. Close the bottom pump clamp (the top clamp will be closed later). Do a preliminary tightening of the peristaltic pump *bottom* channel's tension clamps on the "white-black" pump tubing. Later, when you are able to observe liquid actively draining from the spray chamber, you will make further adjustments to the tension clamps so that the spray chamber will properly drain without applying excessive pressure on the tubing.
2. Firmly insert the tubing end of an autosampler probe (PerkinElmer P/N B300-0161, normally used for the ELAN[®] autosampler), into the small "black-black" peristaltic tubing inlet. Remove the HPLC tubing from the nebulizer. Install regular polyethylene tubing (0.6 mm i.d. x 0.97 mm o.d., typically used for elemental analysis) in the nebulizer. Connect the other end of this tubing to the "outlet" end of the "black-black" tubing on the peristaltic pump.
3. Launch the ELAN[®] ICP-DRC-MS program and note whether all graphical indicators of instrument readiness are green. If not, take the appropriate actions described in the instrument's software and hardware manual.
4. Perform necessary daily maintenance checks as described in Chapter 5 of the *ELAN[®] 6100 Hardware Guide* (e.g., argon supply, interface components, cleanliness, and positioning and interface pump oil condition). Note the base vacuum pressure in the INSTRUMENT window of the software. (Before igniting the plasma, the vacuum is typically between 8×10^{-7} and 1.8×10^{-6} torr.) Keep a record any maintenance procedures along with the base vacuum pressure in the *Daily Maintenance Checklist* notebook.
5. Start the peristaltic pump by pressing the appropriate arrow on the peristaltic pump control panel. Press either the up or down arrow keys to adjust the peristaltic pump speed to "6". Ascertain that the direction of rotation is correct so that the spray chamber is being drained and that waste liquid will go to the waste carboy jug.
6. In the INSTRUMENT window of the ELAN software, click the "Front Panel" tab and click the plasma "Start" button to ignite the plasma. In the same window, the ignition sequence bar (blue progress bar) will start to expand from the right, indicating the approximate time before plasma ignition. Before the bar reaches its end, look at the spray chamber on the ICP-DRC-MS and watch for plasma ignition. Proper ignition will occur suddenly and with a single audible "pop". A bright white light will emanate from the injector assembly that connects to the spray chamber. Maybe the light at first flicker but it ought to establish a more or less steady intensity after 5–10 seconds.

On a rare occasion, the plasma may ignite emitting an orange, violently flickering light, and electrical discharge noises will be heard. In this case, immediately **shut off the plasma by pressing the yellow “Stop” button** on the ICP-DRC-MS instrument’s front control panel. Wait 30 seconds then investigate the cause of the plasma misfire. A more common occurrence is that the plasma may extinguish itself a few seconds after ignition. Promptly reignite by pressing the “Start” button on the ICP-DRC-MS instrument’s front control panel. Usually, the plasma will stay lit after the second try. If not, investigate the cause of this instability (refer to the *ELAN DRC II Hardware Guide*).

7. Soon after the plasma ignites, place the sample probe (the one connected to the peristaltic pump’s “black-black” tubing) into 5% nitric acid rinse solution. Set the speed on the external peristaltic pump to “20”. Watch the tubing that drains the spray chamber for a half minute or so. If the tubing is filling with liquid and you do not see bubbles being carried away from the spray chamber drain, and especially if you see liquid starting to rise within the spray chamber, immediately remove the sample probe from the rinse solution. Check that the peristaltic pump is rotating in the proper direction so that the spray chamber is draining. If not, immediately correct the direction of rotation on the peristaltic pump. Next, tighten the thumb screw on the bottom tension clamp of the peristaltic pump about ¼ turn. Examine smoothness of flow of liquid draining from the spray chamber. If there is no liquid flow or it “goes and stops”, tighten the thumb screw again. Keep tightening the thumb screw until large bubbles flow through the drain line at a consistent pace. Now, slowly loosen the thumb screw until the flow stops or becomes hesitant. Make one final adjustment by tightening the thumb screw ½ turn. At this point, the tension on the peristaltic pump tubing should be correct. Re-insert the sample probe into the rinse solution.
8. Repeat the preceding steps for adjusting the tension clamp for the “black-black” tubing in the top channel.
9. Let the ICP-DRC-MS warm up for 30-45 minutes. In the meantime, in the ELAN program window entitled “Instrument Control Session”, choose menu item File > Review Files. Click the “Load” button for “Optimization”, the sixth item on the list. Navigate to the folder “C:\elandata\Optimize” and click on “As_HPLC_drc.dac” file then click the “Open” button. Return to File > Review Files and click the “Load” button for “Method”, the first item on the list. Navigate to the folder “C:\elandata\Method” and click on “Daily Performance.mth” file then click the “Open” button. Add a new line for arsenic “As” in the Quantitative Analysis Method window. Set the Dwell Time to 50. Do a File > Save and save the edited method as “As_HPLC_daily.mth”. Click on the Sampling tab and uncheck “Peristaltic Pump under Computer Control”. Return to the Timing tab.
10. After warm-up, complete the appropriate daily optimization procedures as described in Chapter 3 of the *ELAN® 6100 DRC Software Guide*. Include beryllium (m/z 9) in the mass calibration, and be sure to use mass calibration solution containing 1 µg/L beryllium. Do the autolens optimization and daily performance check by using a 1 µg/L multielement solution that includes 1 µg/L arsenic. Instrument response for 1 µg/L arsenic should give counts >2000 cps (in Standard Mode). Fill in the *Daily Maintenance Checklist Book* according to the completed optimization procedures. If a tuning (mass-calibration) procedure was done, save it to the file “default.tun,” and also in a separate file containing the analysis date “default_MMDDYY.tun” (where MM=month, DD=day, and YY=year). Save the new optimization parameters (i.e., detector voltages, autolens values and nebulizer gas flow rate) to the file “As_HPLC_std.dac”. Save it again, this time to a new file named “As_HPLC_drc.dac”. Save it a third time to an another new file named “default_<yyymmdd.dac>” (where yy=year, mm=month, and dd=day; do not include the brackets in the file name).

11. If an HPLC analysis is to be run the same day, you may leave the plasma on until it is time to convert the nebulizer to interface with the HPLC. At that point, press "Stop" on the ELAN control panel to turn off the plasma.

m. HPLC-ICP-DRS-MS System Connection and Startup

(1) Interfacing the HPLC Column to the ICP-DRS-MS Nebulizer

1. Turn off ICP-MS plasma, if it is on.
2. Remove any non-HPLC tubing that may have been installed in the nebulizer.
3. Connect the HPLC column effluent tubing (coming from port #2 of the switching valve) to the ICP-DRS-MS nebulizer/spray chamber assembly.
4. Be sure to slide the brown adapter as far as it can go on the glass barrel of the nebulizer before securing it tightly.
5. Before sliding the blue ferrule on the tubing after the red nut, be sure the cone-shaped side of it faces toward the red nut. Insert the end of the HPLC tubing through the brown adapter and as far as it can go into the nebulizer. Snugly tighten the red nut while gently pushing on the HPLC tubing to make sure it does not move.

Important!

Inspect the tubing-nebulizer interface. It is important that there is no gap between the end of the HPLC tubing and the portion of the nebulizer where it abruptly narrows to a capillary tube. Small gaps can contribute significantly to chromatographic peak broadening and tailing.

(2) Priming the HPLC Pump

1. Turn on the HPLC Series 200 Vacuum Degasser (switch is on back of unit).
2. If it has not already been done, place each mobile phase reservoir tubing into the correct reservoir bottles, i.e. place end of tubing "A" into the bottle containing HPLC Buffer A, and end of tubing "B" into the bottle containing HPLC Buffer B. Reservoir tubing "B" and "C" are placed into bottles containing 18 M Ω -cm water. Place HPLC autosampler rinse tubing into the rinse bottle containing 5% acetonitrile in water. Press the "rinse" key on the autosampler to prime and rinse the autosampler fluid path.
3. On the HPLC pump, open the door that accesses the pump head. Attach a 30 mL or larger plastic syringe to the purge port. Open purge port by turning its knob counter clockwise \sim 1/4 to 1/2 turn.

Important!

Be sure the HPLC pump's purge port is open and that a syringe is attached before completing the next step. While there is no specific danger to the analyst, an over-pressure situation can occur that, under certain circumstances, could damage the HPLC pump, column or other components.

4. At the HPLC pump control panel, press the "Purge" button. Press F4 ("%A")

then press F3 ("FLOW"), key in 10 then press the "enter" key. The pump will immediately start and quickly ramp up to a flow rate of 10 mL/min.

5. Allow the pump to fill the syringe with about 15 mL of buffer A. During this time, watch the reservoir tubing for air bubbles which should be flushed out. If there are "stuck" bubbles adhering to the inside wall the tubing, strike the tubing sharply with several firm snaps from your finger to jar and free the bubble(s). The tubing should be bubble-free after ~10 mL of buffer has been pumped through.
6. Press F5 ("%B"). The pump will now switch to reservoir B. Again, watch for bubbles and make sure they are flushed out of the tubing. Allow another 15 mL of buffer to be pumped or until the syringe is almost full, then press the "stop" key to stop flow.
7. Close the purge port (turn knob counterclockwise), remove syringe, and close door. Dispose of syringe contents to waste or in a sink.

(3) Adjusting the External Peristaltic Pump

1. Check the external peristaltic pump's tubing for signs of wear which will be evident by flattening of the tubing and pinch-roller marks. Excessively worn tubing should be replaced.
2. If necessary, install new large diameter ("white-black") peristaltic tubing on the bottom channel of the external peristaltic pump. Connect the left end of the "white-black" to the tygon "waste line" that leads to the large liquid waste carboy jug. Connect the right end of the "white-black" to the tubing that empties the ICP-DRC-MS's spray chamber. Close the bottom channel clamp. Do a preliminary tightening of the peristaltic pump *bottom* channel's tension clamps on the "white-black" pump tubing. Later, when you are able to observe liquid actively draining from the spray chamber, you will make further adjustments to the tension clamps so that the spray chamber will properly drain without applying excessive pressure on the tubing. Close the remaining clamps of the other channels except the top channel.
3. In the peristaltic pump's top channel, install new small diameter "black-black" peristaltic tubing on the top channel and close its clamp. Note that the peristaltic pump will rotate counterclockwise. Into the right end of the "black-black" peristaltic tubing, insert the free end of the tubing that will draw Internal Standard solution (i.e. the one that will come from the Internal Standard bottle). Into the left end of the "black-black" peristaltic tubing, insert the tubing that will carry Internal Standard to the port #6 of the 6-port electrically-activated switching valve. This is a good time to put the free end of the tubing that will carry Internal Standard into a bottle containing 1 liter of Internal Standard solution.
4. Start the ICP-DRC-MS plasma (follow the procedure described in the section *ICP-DRC-MS Warm Up and Performance Check*).
5. Soon after the plasma ignition, press the "purge" key on the PerkinElmer Series 200 Pump control panel. Press function key F5 ("%B") then press the function key F3 ("FLOW"). Key in 1 followed by the "enter" key. The pump will start pumping buffer B at a flow rate of 1 mL/min.
6. Look toward the ICP-DRC-MS and note that, inside the spray chamber, if a mist has developed indicating HPLC mobile phase is flowing out of the nebulizer tip. Watch the tubing that drains the spray chamber for one half minute or so. If the tubing is filling with liquid and you do not see bubbles being carried away from the spray chamber drain, and especially if you see liquid starting to rise within the spray chamber, immediately press the red

“Stop” key on the Series 200 Pump control panel. Check that the peristaltic pump is rotating in the proper direction so that the spray chamber is draining. If not, immediately correct the direction of rotation on the peristaltic pump. Adjust the peristaltic pump’s tubing tension clamps as described in the section *ICP-DRC-MS Warm Up and Performance Check*.

7. Restart the HPLC pump like before and confirm that the spray chamber is being properly drained.

(4) Turning on the Reaction Cell Gas

1. Start the flow of the reaction-cell gas (10% hydrogen, 90% argon) and allow the cell conditions to equilibrate. Make sure the regulator on the reaction-cell gas cylinder is set to approximately 7 psi.
2. Click on the “Manual Adjust” tab of the “Optimization” window and enter a value of 0 in the appropriate cell-gas field (cell-gas A or B, depending on how the instrument is set up). Then enter a value of 0.2 in the same field. A clicking should be heard from the ICP-DRC-MS cell-gas solenoid as the flow turns on.
3. Monitor the flow on the mass-flow controller by clicking on the “Diagnostics” tab of the INSTRUMENT window of the ELAN program and look for a field labeled “Cell Gas A”. The flow should reach approximately “0.2” within 10–15 seconds.
4. Flush the cell gas for 30 seconds by lifting the flush level at the front of the instrument. (The flush step may not be necessary if this same gas cell was used recently and no gas tubing has since been disconnected.) If possible, allow 30 minutes for the cell to equilibrate before beginning analysis, with the cell gas flowing at 0.2 mL/min. Note: The cell gas will automatically turn off after 1 hour if the analysis has not begun.

n. Entering Sample Names into the ELAN Sample Table

1. Clicking on the tool bar icon that looks like three Erlenmeyer flasks. If the current Samples window is not this run’s sample file, then choose File > Open on the menu bar and navigate to and open this run’s current data folder in “C:\hplc\data\”. Click on the file named “As<yymmdd>.sam” (yy = year, mm = digit month, dd = date) and open it. The Samples window will be the one created in the section *Creating the ELAN Sample Table “.sam” file*.
2. Fill in the name of each sample by double-clicking after the “_” (underscore) in the cell matching its “A/S Loc”. Type in the sample name and press “Enter” on the keyboard. In this manner, enter the name of every blank, calibrator, quality control, and sample that will analyzed in the run. If barcodes are used on the sample labels, use the barcode scanner attached to the ICP-DRC-MS computer to scan the sample ID from the barcode on each sample before placing it into position in HPLC autosampler tray.
3. Keep the following in mind while filling out the Samples table.

Autosampler tray position 100 will contain the vial containing a mixture of excess low and high QC samples (roughly mixed in 1:1 proportion), called “EQ”, which will be injected with five replicates during the initial system equilibration period that occurs before the start of calibration. “EQ” is not a QC sample but is strictly used for equilibrating the HPLC and conditioning the ICP-DRC-MS.

Urine arsenic species HPLC/ICP/DR/CMS (Formerly Arsenic species in Urine)
NHANES 2007-2008

Autosampler tray position 99 needs to contain a blank vial (even an empty vial will do).

Insert a "Bk" for each position as follows: before the first calibrator "S0"; after the last calibrator "T7"; and before and after each set of QC sample(s), that is, in front of and immediately following each batch of samples.

TABLE 8-14: ELAN SAMPLES TABLE

A/S Loc.	Batch ID	Sample ID	Measurement Action	Method	...	Wash Speed (+/- rpm)
100		101_EQ	Run Sample			0
100		102_EQ	Run Sample			0
100		103_EQ	Run Sample			0
100		104_EQ	Run Sample			0
100		105_EQ	Run Sample			0
1		001_Bk	Run Sample			0
2		002_S0	Run Sample			0
3		003_S1	Run Sample			0
4		004_S2	Run Sample			0
5		005_S3	Run Sample			0
6		006_S4	Run Sample			0
7		007_S5	Run Sample			0
8		008_S6	Run Sample			0
9		009_S7	Run Sample			0
10		010_T0	Run Sample			0
11		011_T1	Run Sample			0
12		012_T2	Run Sample			0
13		013_T3	Run Sample			0
14		014_T4	Run Sample			0
15		015_T5	Run Sample			0
16		016_T6	Run Sample			0
17		017_T7	Run Sample			0
18		0182_Bk	Run Sample			0
19		019_LU-XXXX	Run Sample			0
20		020_HU-XXXX	Run Sample			0
21		021_Bk	Run Sample			0
...	...rows for 20 samples omitted for brevity		
41		041_Bk	Run Sample			0
42		042_LU-XXXX	Run Sample			0
43		043_HU-XXXX	Run Sample			0
44		044_Bk	Run Sample			0

The sample names will resemble those typed in bold in the example table above. In the example table above, a run of 20 samples is shown so the last vial ends up being placed in A/S Location #44. Of course, the actual position of the last sample depends on the total number of vials in the autosampler tray. Be sure to delete all unused rows after the last vial in the ELAN Samples window, i.e. clear all rows after the last row by selecting them and press Ctrl-Delete.

The numbers preceding the underscore character (with the exception of sample numbers "101" through "105") correspond to the order of injection. These numbers will later help the analyst find individual chromatograms based on injection number rather than being forced to scroll long lists of alphabetically-sorted file names in Windows Open File dialog boxes looking for specific sample names during post-run data processing in TotalChrom™.

4. When satisfied that the Sample table entries are correct, choose File > Save.
5. Print the ELAN Sample table by choosing the File > Print Setup > Reports command. In the ensuing dialog box, select the preferred printer and click OK. Next, choose File > Print and then click the Print button. Refer to the printout of the ELAN Sample table for the correct vial positions when loading samples into the HPLC autosampler tray.

o. Starting the Run

1. Restart the ELAN controller computer by going to the Windows Start button and choosing "Restart". This serves to purge the computer of possible memory/register conflicts and will give the system and ELAN software a fresh start. It is unnecessary to shut off the plasma as the ELAN instrument will sustain it while the computer does a restart.
2. Check that the 6-port switching valve is turned on, that the lower green diode is lit, and "1" is showing in the LCD display. If it is not, configure the switching valve as described in the section *Six-Port Switching Valve*.
3. Check the waste carboy. If more than two-thirds full, empty it.
4. Check that the tubing that draws internal standard is inserted into the bottle containing Internal Standard and that there is sufficient quantity of Internal Standard.
5. Check that there is sufficient mobile phase to last the entire run. In addition, be sure that Bottle D and the HPLC Autosampler's wash bottle contains sufficient amount of 5% (v/v) acetonitrile.
6. Set the HPLC Series 200 Column Oven to 35°C.
7. Check for stray ".nc" files by using Microsoft Windows® File Explorer to look inside the C:\elandata\ReportOutput folder. Move any existing files that end with ".nc" extension to another folder so that the C:\elandata\ReportOutput folder is empty of ".nc" files. Close Windows File Explorer.
8. Launch ELAN Instrument Control program if it is not already. Do not launch or start any other programs at this time.
9. Check that the correct Sample file in the window "Instrument Control Session" is active. If it is not correct, load the correct Sample file. In this window, note the injection number of the last vial as indicated by the numbered prefix leading the first underscore ("_") character (e.g., 42 from "042_samplename").
10. Check that the HPLC pump methods are correctly programmed according to *Programming the HPLC Pump Methods*. On the HPLC pump, press the softkey F5 ("SEQ"). Confirm that there are just three lines indicating sets 1, 2 and 3. Check that sets 1 and 3 are configured according to step 8, page 24. Press softkey "SET", input 2 then press the "enter" key. Press softkey F4 ("LAST") and input the injection number of the last vial noted in the preceding step. Press the "enter" key. Press softkey F6 ("LINK") then press the "return" key. The display will return to the top level. Confirm that the top line in the pump control panel display displays "METHOD01 STORD SHTDN Q01.100.00" indicating that the pump methods are now linked. Do

not press the softkey F8 ("STRT") at this time.

11. Check that the HPLC autosampler methods are correctly programmed according to *Programming the HPLC Autosampler*. On the HPLC autosampler, press the softkey F6 ("DIR"), followed by softkey F4 ("RCL"). Input 2 then press "enter" followed by "yes". Next, press F2 ("METH"). A new screen presents a table with column headers "First", "Last", "Volume", "Replicates" and "Time". Using the arrow keys on the autosampler panel, highlight data field "LAST" and input the injection number of the last vial noted in the preceding two steps. Press the "enter" key. Next, press F6 ("STOR"), input 2 then press the "enter" key. Respond to the next two prompts with a "yes" then a "no". Press the "return" key. If the word "LINKED" does not appear on the autosampler display, then link the methods together by pressing the F6 function key ("LINK").
12. Check that the correct ELAN method is loaded and active in the window "Instrument Control Session". If it is not correct, load the correct Method file. Check under the Sampling tab that "Peristaltic pump under computer control" is unchecked, and the pull-down menu "Sampling" indicates "External".
13. Check that the DRC gas is indeed flowing by making the ELAN's Instrument window active and clicking on the Diagnostics tab. Inspect the Cell Gas A or B, its value should be fluctuating at 0.2 ± 0.01 mL/min. If it is not, see section *Turning on the Reaction Cell Gas* for details to turn on the DRC gas flow. Click on the Manual Adjust tab and set "DRC Mode NEB" to the same value as "Nebulizer Gas Flow [NEB]". Make the optimization window active and Choose File > Save to save the method file.
14. Choose File > Review Files in the "Instrument Control Session" menu bar. In the next window, click the "Load" button for "Dataset" (second item) and navigate to this run's data folder, double-click on it and click on the "OK" button. The correct Dataset path should now be indicated. Click the "Done" button.
15. Check that all blanks, calibrators, QC and sample vials are loaded into their correct positions in the HPLC autosampler tray, as designated by the ELAN Sample window (or its printout).
16. This step is optional but offers the advantage that the ELAN data files will be converted in real time to TotalChrom™ ".raw" files that have names containing a date-time stamp corresponding to actual time of injection.
 - (a) Launch TotalChrom™ Navigator. In the resulting TotalChrom™ Navigator window, choose menu item Apps > ChromLink (alternatively, you may launch ChromLink™ from the operating system Start > Programs menu).
 - (b) In the ChromLink™ program window, choose the menu item Configuration > Mass Details and check the Nominal Name and Mass for arsenic. If it is missing or the ELAN tune ("default.tun") file was re-optimized earlier then ChromLink™ needs to be configured (see *Configuration of ELAN ChromLink™* on page 45 for details). To save time, the analyst may choose to close the TotalChrom™ Navigator and ChromLink™ windows and skip step 16 in its entirety. Data file conversion via ChromLink™ can easily be done during post-run data reprocessing.
 - (c) In the ChromLink program window, click on the "Browse" button just right of the "ELAN ChromLink file location" field. Navigate to the current working folder, double-click on it then click the "OK" button so that ChromLink knows where to save its processed files.
 - (d) Otherwise, refer to step (b) of *Data Processing and Analysis* on page 47 for details on proper setting of the ELAN ChromLink™ window's parameter fields. In the ELAN ChromLink window, click the button "Start Processing ELAN Data Files" to

put ChromLink in watch mode so it will process each data for each injection in real time. A new dialog box will open and indicate it is ready to convert data and waiting for the first file.

17. Click on the ELAN "Instrument Control Session" window to make it active, and then click the mouse in the Samples window on the corner rectangle of the sample table (where row headers intersect column names). The entire sample table will become highlighted (dark background). Click the "Analyze Batch" button. A Run Progress box will appear indicating that the ELAN software is now waiting for a signal from the HPLC that indicates the occurrence of an injection.
18. On the HPLC pump, press softkey F8 ("STRT"). This will start the flow of Buffer A and put the pump into a "wait for injection" mode.
19. On the HPLC autosampler, press the "start" key. If the equilibration wait time has been reached, the autosampler will immediately begin its injection sequence. Otherwise, it will respond with the message "WAITING FOR EXTERNAL READY" and wait for the equilibration wait time to complete.
20. In the Instrument window, click the "Auto Start/Stop" tab. It is important to note that if the "Enable" radio button is already selected and an ELAN run was cancelled by the analyst, you will need to select the "Disable" radio button to reset the Auto Stop timer. Forgetting to do this will result in premature shutoff of the plasma. Following this action, click the "Enable" radio button. Next, click on the "Change" button and set the "Delayed Shutdown Time" to 30 minutes. Click Okay.
21. Open the ELAN "Instrument Control Session" Real-Time window by clicking the tool bar button that looks like a Gaussian distribution (or a blue chromatographic peak, if you prefer). After the Real-Time window opens, click on the drop-down menu and select "Signal". Real-time data will now be displayed.

When the HPLC pump's equilibration time has been reached, the autosampler will seek the first vial and make an injection. A blue bar in the ELAN's progress box will now indicate that data is being collected. The system can now run unattended.

Check the progress of the run after 2 or 3 injections. Note the chromatograms appearing in the ELAN's Real Time window. Adjust the signal scale in the Real Time window, as necessary. Compare the positions and peak heights of each arsenic species relative to the internal standard. It helps to visually compare it to a printed reference chromatogram. If abnormalities in retention time, peak height or shape are readily apparent, the analyst may need to stop the autosampler and abort the run in the ELAN program. If further necessary, stop the HPLC pump. The HPLC pump and autosampler are stopped by pressing the "stop" buttons on their respective control panels. Correct the problem(s) and restart the run.

Important

Remember to disable the ELAN's Auto Stop feature before re-enabling it otherwise the ELAN may perform an auto shutoff prematurely.

p. Instrument Shut Down

1. Shut off ICP-DRC-MS plasma if it has not already done so. Stop the peristaltic pump and loosen tensioning bars and tubing.
2. Check that the HPLC autosampler controller readout indicates that the sequence was

successfully completed. If not, note the message and investigate the reason for the message, for example, if a sample vial is missing.

3. At the controller computer, visit the ELAN Instrument Control Session application and open the "Dataset" window. Confirm that all samples ran successfully and that the corresponding data for each sample is listed in this window.
4. Turn off the HPLC degasser.
5. Reduce the temperature setting on the column oven to < 20°C.
6. Disconnect the HPLC tubing from the nebulizer and place it in the waste line.
7. Pump ~50 mL of 5% acetonitrile in water through the HPLC column at a flow rate of 1 mL/min. Shut off pump after completion of this step.
8. Remove the calibrator, QC and sample vials from the HPLC tray. Discard them according to CDC biohazard waste disposal guidelines.

9. POST-RUN DATA ANALYSIS

a. Configuration of TotalChrom™ Integration Method

The following information is presented as a starting point to help the analyst develop robust Integration Method parameters that will work best for most chromatography data. Many of these parameters will work just fine as presented below. However, the separation chemistry of HPLC columns can vary due to frequency of use, column replacement, or because of individual sample "oddities". Some parameters may need to be fussed with from time to time to maximize the ability of TotalChrom™ to properly integrate peaks and identify components with a minimum of operator intervention. Therefore, the analyst should pay particular attention to the chromatograms produced in every run and make necessary adjustments as warranted. The analyst should be familiar with the TotalChrom™'s frequently used integration functions, which are described in Chapter 18 of *TotalChrom Workstation User's Guide: Volume II*.

1. The creation of a new method file in TotalChrom™ is done the first time TotalChrom™ is setup, or it will need to be recreated if the file "Arsenic1.mth" cannot be found or has been corrupted. In the TotalChrom™ Navigator window, choose the menu item Build > Method. In the next dialog box, click the "Create a new method" radio button and click OK. The default method will load into the method editor.
2. Choose the menu item Process > Integration. Click on the "Integration" tab in the "Process" window. Enter the information shown in TABLE 9-1.

TABLE 9-1: INTEGRATION

Basic Parameters		Advanced Parameters	
Bunching Factor :	1	<i>Peak Separation Criteria</i>	
Noise Threshold :	5	Width ratio :	0.2
Area Threshold :	25	Valley to peak ratio :	0.01
		<i>Exponential Skim Criteria</i>	
		Peak height ratio :	5

Urine arsenic species HPLC/ICP-DRS (Formerly Arsenic species in Urine)
NHANES 2007-2008

Adjusted height ratio : 4
Valley height ratio : 2

The analyst may make appropriate changes to one or more of the Integration parameters in TABLE 9-1 as may prove necessary.

Click on the “Baseline Timed Events” tab. Enter the information shown in TABLE 9-2.

TABLE 9-2: BASELINE TIMED EVENTS

Defined Events

Time	Event	Value	Code	Level
0.000	Smooth Peak Ends On	5	+SM	
0.000	Locate Maximum On		LM	
0.000	Set Bunching Factor	3	BF	
0.000	Disable Peak Detection		- P	
0.350	Enable Peak Detection		+P	
0.500	End Peak Detection Inhibit		+I	
1.000	End Peak Detection Enable		- I	
1.000	Locate Maximum Off		-LM	
1.000	Set Bunching Factor	1	BF	
1.200	Common Baseline On		+CB	
2.200	Set Bunching Factor	2	BF	
2.250	Common Baseline Off		- CB	
6.250	Set Noise Threshold	3	NT	
6.250	Set Area Threshold	15	AT	
8.750	Peak End Detection Inhibit		+I	
10.80	Peak End Detection Enable		- I	

Be sure there is no checkmark in the box for “Correct actual times of all baseline events based on actual RT of nearest reference peak”. The parameters in TABLE 9-2 are starting points. The analyst may make appropriate changes to one or more of the Baseline Timed Events as may prove necessary.

- Click on the “Optional Reports” tab. Uncheck the box for “Keep temporary files”.
- Click on the “Replot” tab. Enter the information shown in TABLE 9-3.

TABLE 9-3: REPLOT

Plots	Miscellaneous
Generate a separate replot : not check	Start plot at end of delay : checked
Retention Labels : Peak crests*	Gradient overlay : not checked*
Component Labels : Actual time	Draw baselines : checked*
Scaling Type : Autozero offset	Timed Events : checked*

Urine arsenic species HPLC/ICP/DRCMS (Formerly Arsenic species in Urine)
NHANES 2007-2008

Scaling Parameters

Full scale (mV) : 2.000*

X axis label : Time [min]

Y axis label : Intensity [cps]

*These parameters maybe altered to suit the analyst.

It is unnecessary to click on the “User Programs” tab because it is not used. Close the Process window by clicking on the “OK” button. The parameters in TABLE 9-3 are starting points. The analyst may make appropriate changes to one or more of the Replot parameters as may prove necessary.

- In the Method Editor window, choose the menu item Components > Global Information. Click on the “Integration” tab in the “Process” window. Enter the information shown in TABLE 9-4:

TABLE 9-4: Global Information

Volume units :	µL	<i>Unidentified Peak Quant.</i>	
Quantitation units :	µg/L	Calibration factor :	1.000e+99
Sample Volume :	1.000	Always use calib. Factor :	selected
Void time (min) :	0.000		
<i>Calibration</i>			
Internal Standard	selected	<i>RRT Calculation</i>	
Reject outliers during calibration :	Not checked	Use first peak in run as RRT reference:	selected
<i>Sample Amount Options</i>			
Correct amounts for calibration standards :	Not checked		
Convert unknown samples to concentration units:	Not checked		

The “LIMS Results” tab is not used. Click the “OK” button to close the window. The parameters in TABLE 9-4 are starting points. The analyst may make appropriate changes to one or more of the Global Information parameters as may prove necessary.

- In the Method Editor window, choose the menu item Components > New Component. The white list box in the left portion of the window will be empty. Click in the empty field labeled “Name” and type “IS”. Press the tab key and enter “0.6” in the field labeled “Retention time”. Put a checkmark in the box labeled “This component is an internal standard”. Select the radio button labeled “Peak” if it is not already selected. Leave the other fields and check boxes unaltered. Click the “New Component” button. Enter each of the component names and parameters listed in TABLE 9-7.

TABLE 9-5: METHOD EDITOR – COMPONENTS SETTINGS

Name	Retention Time	Absolute window	Relative window	Find tallest peak	Is a retention reference?	Internal Standard	This Component is an Int. Std?	Use as a RRT reference?
IS	0.6	5	3	No	No		Yes	No
AC	1.70	3	3	No	No	IS	No	No
AB	2.00	0	3	No	No	IS	No	No
TMAO	2.10	3	3	No	No	IS	No	No
AsIII	2.50	5	3	No	No	IS	No	No
DMA	4.00	5	3	No	No	IS	No	No
MMA	9.70	50	3	No	No	IS	No	No
AsV	11.90	0	3	No	No	IS	No	No

Click the “New Component” button before starting a new component. After entering the last component, click the “OK” button. The values for Retention Time, Absolute Window and Relative Window serve as starting points. The analyst may alter these values as actual chromatographic results may dictate.

- In the Method Editor window, choose the menu item Components > Defaults. Click on the “Identification” tab”. Enter the information shown in TABLE 9-6 and TABLE 9-7.
- Click on the “Calibration” tab in Components Defaults Window. Enter the information shown in Table 10-6.

TABLE 9-6: COMPONENTS DEFAULTS — IDENTIFICATION

Component Type :	Peak	Reference :	blank
Absolute window :	5	Internal Standard :	IS
Relative window :	5	Find tallest peak :	Not checked

TABLE 9-7: COMPONENTS DEFAULTS — CALIBRATION

Calibration Type :	Use Curve	<u>Level</u>	<u>Amount</u>
Curve Type :	1 st Order	S0	1.0000E-6
Scaling :	None	S1	2
Weighing :	None	S2	10
Purity (%) :	100	S3	50
Response :	Area	S4	150
Origin Treatment – Include :	Not checked	S5	250
Origin Treatment – Force :	Not checked	S6	500
		S7	1000

9. The "User Values/LIMS" tab is not used. Close the "Components Defaults" window by clicking the OK button.
10. Click on the Components item in the menu bar in Method Editor. If the menu item "Delete All Components" is not grayed out, select it and click the OK button when prompted to "Delete all components, calibration levels, and calibration replicates", click the OK button.
11. In the Method Editor window, choose the menu item Components > New Component. The white list box in the left portion of the window will be empty. Click in the empty field labeled "Name" and type "IS". Press the tab key and enter "0.6" in the field labeled "Retention time". Put a checkmark in the box labeled "This component is an internal standard". Select the radio button labeled "Peak" if it is not already selected. Leave the other fields and check boxes unaltered. Click the "New Component" button. Enter each of the component names and parameters listed in TABLE 9-7.
12. In the Method Editor window, choose the menu item Components > Edit Component, and then click the "Calibration" tab. Click to highlight "TMAO" in the component list box. The click on the cell containing "S0" and type "T0" (capital "T") on the keyboard followed by the Enter key. In this manner, replace "S0" through "S7" with "T0" through "T7", respectively. Click the OK button when finished.
13. In the Method Editor window, choose the menu item Instrument > Notes, and type in the notes as shown in TABLE 9-8 (make corrections as necessary to appropriate variables so that the actual conditions are recorded).

TABLE 9-8: NOTES FOR ARSENIC SPECIATION BY HPLC-ICP-MS

Instrument	:	PerkinElmer Series 200 Pump and Autosampler
Injection Volume	:	20 µL loop (2.5X overflow method)
Column	:	Hamilton PRP-X100 PEEK (P/N 79175 S/N<actual S/N>) Received <date>
Col Dimensions	:	4.6 X 150 mm
Particle Size	:	3 micron
In-line Filter installed	:	Yes
Sample Inj. Volume	:	20 µL
Mobile Phase		
Bottle A	:	TRIS 10 mM / Amm Carbonate 10mM, pH 8.70 (date prepared)
Bottle B	:	Amm Sulfate 20mM pH 7 (date prepared)
Bottle C	:	18 MΩ·cm water
Bottle D	:	5% (v/v) acetonitrile in 18 MΩ·cm water
Flow Rate	:	1.0 mL/min
Back Pressure	:	1050 – 1150 psi
Int. Std.	:	2.5 µg/L Trimethylarsine oxide (TMAO) in H ₂ O
Int. Std Loop	:	200 µL
Int. Std Start	:	0.5 min
Int. Std End	:	1.0 min
Temperature	:	35 °C
Pump Method		
Step 0	:	6.5 min 100% A
Step 1	:	5 min 0 -->100% B, gradient curve = 2
Step 2	:	6.5 min, 100% B

Detector : ICP-DRC-MS with Meinhard/Cyclonic (DRC mode)
10% Hydrogen in Argon, Cell Gas Flow = 0.2, Rpq = 0.6

Click the OK button to close window.

14. In the Method Editor window, choose the menu item File > Description, and type in your name and date this method was created. Add any other pertinent information at this time. Click the OK button to close window.
15. In the Method Editor window, Choose File > Save As. A window appears inviting you to enter any information pertinent to this method, which will be saved with the method. Enter your name and the date this method was created. Click the OK button and a "TotalChrom™ File-Save-As" dialog box opens. Navigate the directory tree to get to the folder C:\HPLC\Methods). Double-click on this folder. In the "File name:" field, enter "Arsenic1.mth". If there is already a file in that folder with the same name, highlight that file and right-click the mouse. Choose "Rename" and give the file a new name (e.g. add "backup" to the name). Now, you can click the Save button. Close the "Method Editor" window.

b. Configuration of ELAN ChromLink™

ELAN ChromLink™ should be configured after initial installation of the program or when the ELAN tune ("default.tun") file is re-optimized, and when there is available at least one recent ELAN NetCDF file (with the ".nc" extension) containing data for the mass of interest that was collected since last update of the "default.tun" file.

1. Launch TotalChrom™ Navigator. In the resulting TotalChrom™ Navigator window, choose menu item Apps > ChromLink (alternatively, you may launch ChromLink™ from the operating system Start > Programs menu).
 - (a) Inside the ELAN ChromLink window, click on menu item Configuration > Default TotalChrom Method. Click on the "Browse..." button and navigate to the directory C:\hplc\methods\. Select "Arsenic1.mth" and click the "Open" button. "C:\hplc\methods\arsenic1.mth" will now be the ChromLink™ default method. Click "OK" to close the "Default TotalChrom Method" window.
 - (b) Inside the ELAN ChromLink window, click on the "Set" button. A window entitled "Operating Mode" will open. Click on the "Manual – process single ELAN NetCDF file" radio button, and then click the "Review ELAN NetCDF mass file components before processing" radio button. Click the "OK" button to close the window. Click on the "Browse..." button for "ELAN NetCDF file – location/file to be converted" field. An open file dialog box will open, prompting you to choose a file. Navigate to the latest working HPLC Data folder and choose any file with the ".nc" extension (perhaps one of the calibrators). Click "Open", the dialog box will disappear and you will be returned to the "ELAN ChromLink" window. The path and file to be converted will now be shown in the field called "ELAN ChromLink file – location/file to be converted".
 - (c) Click on the "Start Processing ELAN Data Files" button. A window entitled "Processing ELAN Data" will briefly open, followed by a window called "Mass Components in ELAN Data File". The file name being processed will appear in the ELAN File Contents panel along with its "Mass" and "Nominal Name". Write down the mass value. The next panel called Configured Mass Components will show the mass and nominal name of the mass components that will be identified from the configured list and be processed as separate TotalChrom RAW files. If the fields for "Mass" and "Nominal Name" are empty, or are different compared to the

corresponding fields for Configured Mass Components, then click the “Edit Configured Mass Components” button. A new window called “List of Mass Components” will open. Click on the cell in the table at the top of the window containing the mass that you wrote down earlier. Next, Click on the field named “Nominal Names” in the “Names” panel and enter “As”. Be sure the field named “ELAN Name (mass)” contains the mass value that you wrote down earlier. Leave the field “Expression” unchanged. Next, click on the “Browse...” button and navigate to “C:\hplc\methods\arsenic1.mth” then click “OK”. Put a checkmark in the box for “Process this mass component to produce its own TotalChrom RAW file”. Make sure the other box for “Process this mass component as part of an expression” is unchecked. Now, click the “Update Selected Mass Component” button. One line should now show the following information:

Nom. Name	Mass	Expression	raw?	In expr?	TotalChrom Method File
As	74.92 [†]		X		C:\HPLC\Methods\Arsenic1.mth

[†] Or some value close to the atomic weight of arsenic.

If not, repeat the above steps, except this time click the “Add as a new mass component” button. Delete unnecessary lines by clicking on the line then clicking the “Delete selected mass component” button. When satisfied that the List of Mass Components window is properly configured, click the “Close” button. Next, click the “Close” button to close the “Mass Components in ELAN Data File” window. Close the “Processing ELAN Data” window by clicking its “Close” button.

- (d) Inside the ELAN ChromLink window, click on the “Set” button. A window entitled “Operating Mode” will open. Click on the “Automatic – process all ELAN NetCDF files in specified location” radio button. The lower radio buttons will gray out. Click the “OK” button to close the window.
 2. At this time, ChromLink™ may be closed by selecting File > Exit. Click “OK” at the dialog box asking if you want to quit ChromLink™.
 3. In addition to configuring ChromLink™ itself, it is necessary to alter one value in the “seed” method file that ChromLink™ uses to set a select number of parameters to certain default values. This step only needs to be done once following the installation of ChromLink™.
- (a) In the TotalChrom™ Navigator window, choose the menu item Build > Sequence and a dialog box called “Startup” will appear. Click on the radio button labeled “Load sequence stored on disk” then click the OK button. Navigate to the folder on the C drive that contains the ChromLink™ program file (usually in C:\PenExe\ChromLink but if it is not there, check under the C:\Program Files directory). Click on the sequence file “seed.seq” to highlight it (if this file is missing, reinstall ChromLink™). Click the Open button. A spreadsheet style sequence table will present itself in a window called “Sequence Information – Channel A”. There will be a minimized window for channel B data, ignore this window. Horizontal scroll to the “Int Std Amt” column and click on the first cell in row 1 in this column. Replace the existing value with the concentration of working Internal Standard specified on page 19 under *Preparation of Working Solutions*.
- (b) Choose menu item File > Save. Close the Sequence Editor window by choosing File > Exit from the menu bar.

c. Data Processing and Analysis

Refer to Figure 1 “Post-Run Data Processing Work Flow Diagram” (page 48) for a summary representation of the important aspects of post-run data processing.

1. Open Microsoft Windows[®] File Explorer and open the current working HPLC data directory (e.g., C:\HPLC\Data\® Recycling Bin.
2. If it is not already open, launch TotalChrom[™].
3. If ChromLink was not run in real-time data collection mode during the run, as described in step 16 under *Starting the Run* (see page 38), then do the following:
 - (a) in the TotalChrom[™] Navigator window, choose menu item Apps > ChromLink. Choose the menu item Configuration > Mass Details and check the Nominal Name and Mass for arsenic. If it is missing or altered then ChromLink[™] needs to be configured (see *Configuration of ELAN ChromLink[™]* on page 40 for details).
 - (b) Check that the Mode field indicates “Automatic – Process all NetCDF files in specified location”. If it does not, click the Set button to the right of this field and in the resulting “Operating Mode” dialog box, click the “Automatic – process all ELAN NetCDF files in specified location” radio button, then click the OK button. Next, check that the Field labeled “ELAN NetCDF file – location/file to be converted” indicates the correct data folder. This should be “C:\elandata\Reportoutput*.nc”. If it is not, click the Browse button to the right of it and, in resulting dialog box, navigate to that folder. Double-click on that folder then click the OK button to close the front most dialog box. Last, click the Browse button to the right of the field labeled “ELAN ChromLink file location...” In the dialog box “Select TotalChrom[™] Data Location”, navigate to the folder containing the run data and double-click on it. Click the OK button to close that dialog box. In the ELAN ChromLink window, click the button “Start Processing ELAN Data Files” to start processing of the run data. A new dialog box will open and provide current information on the status of the data conversion.
 - (c) When data conversion by ChromLink is completed within a minute or two, a message in the Step field will indicate “Successfully Finished”. Click the Close button. At this point, you may close the ELAN ChromLink application by choosing File > Exit or clicking on the window “x” box. In the resulting “OK to quit?” confirmation dialog box, click the OK button.
4. In the TotalChrom[™] Navigator window, choose the menu item Build > Method. Click the “Load method stored on disk” radio button and click OK. In the TotalChrom[™] File-Open” dialog box, find C:\HPLC\Methods folder and open “Arsenic1.mth” file. The template method file should now be loaded.

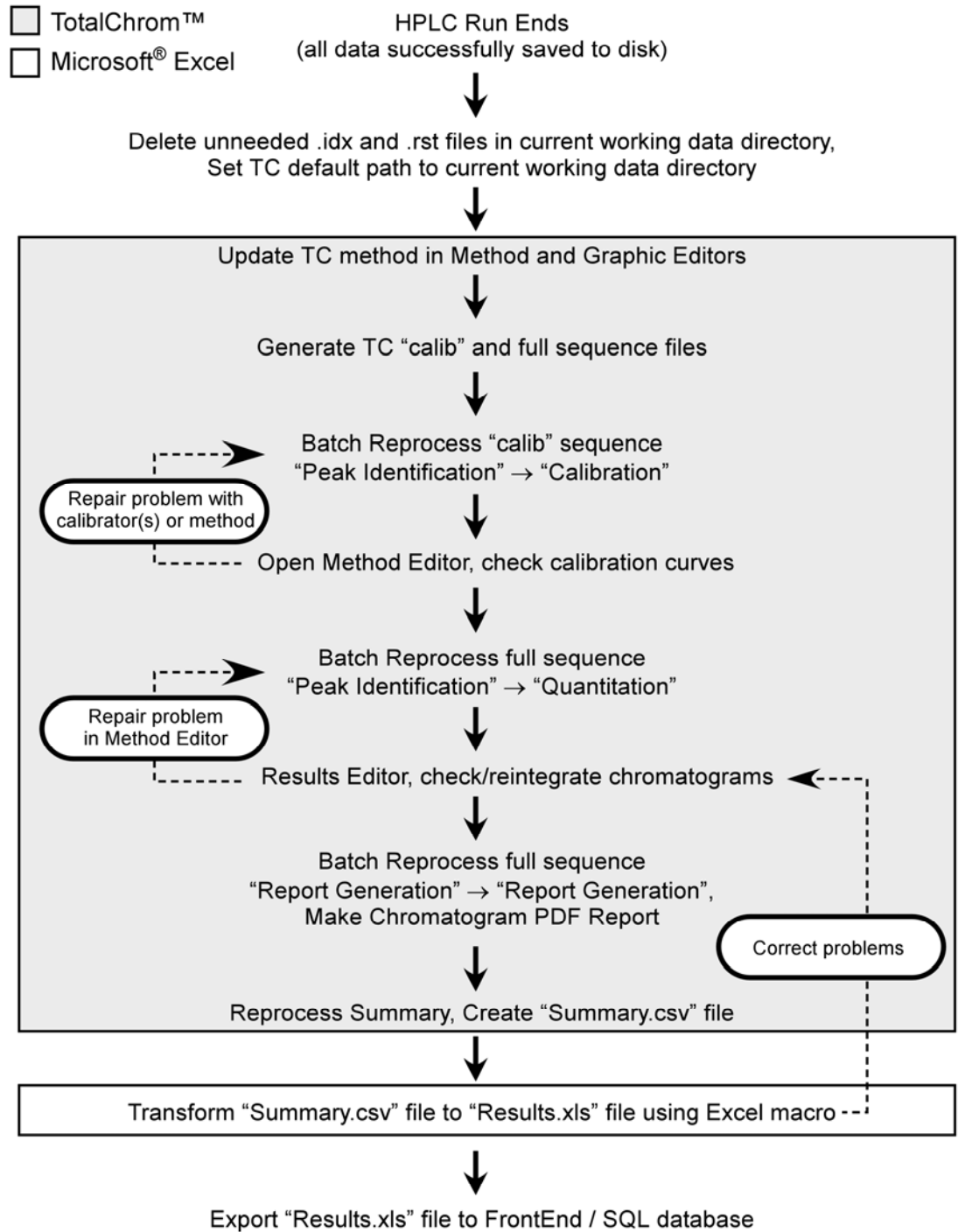


FIGURE 1: POST-RUN DATA PROCESSING WORK FLOW DIAGRAM

If, instead of loading the method file, an error message appears stating that the file is unavailable because it is in use and asks if you would like to open it in Read-Only mode, click the "No" button. Cancel the Open-File dialog box. Exit the Graphic Method Editor. In the Navigator window, choose menu item Admin > CAM Administrator. A window will appear with two panes. In the left pane, click on the "+" sign in front of "TotalChrom Servers" to expand it. Click on the computer icon on the next line that just appeared to highlight it. In the right pane, under the heading "Resource/Instrument", select the first item. If there is more than one item, select every item by shift-clicking on each item. Every item should now be highlighted. Choose Edit > Remove Locks (or press the Delete key on the keyboard). Next, click on the "+" sign in front of "Users" to expand it. Click to highlight your TotalChrom™ user name that appeared. In the right pane, under the heading "Resource/Instrument", select every item and Choose Edit > Remove Locks. This action serves to unlock files and make them available for editing. If in the future, TotalChrom™ complains that files cannot be edited because they are locked, use CAM Administrator to unlock them. Choose File > Exit to quit CAM Administrator. Start again at the beginning of this step to open the Method Editor.

5. Choose File > Save As. At the next window you will be invited to enter information about the method. You may enter pertinent information but this is optional. Click the OK button and a TotalChrom™ File-Save-As" dialog box opens. Navigate the directory tree to get to the folder that contains the ELAN data files for this run (typically in the folder C:\HPLC\Data\). Double-click on this folder. In the "File name:" field, enter the same name as it exactly appears for the folder that will contain it (i.e. As<yymmdd> convention where yy=2-digit year, mm=2-digit month, dd=2-digit date). Click the Save button then close the "Method Editor" window.
6. In the TotalChrom™ Navigator window, choose the menu item Build > Graphic Edit. Graphic Method Editor's menu bar, choose File > Open and navigate the file-open dialog box to the folder containing the method file created in the preceding step. Click on that file and click the Open button. Return to Graphic Method Editor's menu bar and choose File > New Data File. Navigate to C:\HPLC\Data\ and double-click on the folder containing the run data. Find and click on a data file (indicated by the ".raw" extension) that corresponds to the "S5" calibrator run. When this file appears in the File Name field, click the Open button. In the ensuing File-Open dialog box that presents itself, click the "Cancel" button. If a message box appears with the warning "Unable to open this file: default.mth", click OK to clear the message (you do not have to go to CAM Administration to unlock it). Do the same if another message warning box appears, i.e. click OK again to clear it? You should be in the "Graphic Method Editor - <path to method file>" window and see a chromatogram.
7. Choose menu item Calibration > Show Windows and retention window bars (looks like "H" style error bars) will appear. Each retention time window bar should be located above the chromatographic baseline and contain an identified peak within its bounds. If there are any bars at the bottom of the chromatogram located below the baseline, choose menu item Calibration > Edit Components. Click on the first arsenic species peak that falls outside its retention time window to select it. In the group of data fields located on the right side of the window, click on the "Name" dropdown arrow (located on the right side of the data entry field) and choose the appropriate species by name. Next, click on the "ISTD" field's dropdown arrow and choose "IS". Be sure the "ISTD" checkbox is unchecked unless you are editing the "IS" peak, in this case put a checkmark in the "ISTD" checkbox. It is usually not necessary to alter the retention time window's "Absolute" and "Relative" window parameters, but you may do so if experience dictates that a change will be beneficial. Click the Next or Prev button. Repeat these steps for each arsenic species peak that was not properly identified because it was outside its retention time window. Since TMAO is not present in any of the "S" calibrators, choose File > New Data and open one of the "T"

series calibrators that contain TMAO (e.g., T5) and confirm its identity and retention time window like what was done for S5. When the editing of peak retention time windows is completed, click on the menu bar item "Return". Next, choose File > Save followed by File > Exit.

8. Launch Microsoft® Excel and choose menu item HPLC > Create TC Sequence File (the Excel macro "HPLC TransformData.xls" must be installed in Excel's Startup folder). In the open file dialog box, navigate to the current working HPLC data folder. Click on a RAW file then click the "Open" button. Wait about 30 seconds until a "Done" message box appears. Excel will create two sequence files, one containing just the calibrators (name ending with "calib.seq") and the other file containing all samples and calibrators (named As<yymmdd>.seq). You may leave Excel open.

Skip the following steps (a) through (c) unless, for some reason, the Excel menu item HPLC > Create TC Sequence File cannot be run:

(a) In the TotalChrom™ Navigator window, choose the menu item Build > Sequence and a dialog box called "Startup" will appear. Click on the radio button labeled "Load sequence stored on disk" then click the OK button. Navigate to the folder containing the run data and click on the sequence file (ends with ".seq") for corresponding to the run (typically named in the As_yymmdd.seq format). Click the Open button. A spreadsheet style sequence table will present itself in a window called "Sequence Information – Channel A". There will be a minimized window for channel B data, ignore this window. Look for the "Method" column and click on the first cell in row 1 in this column. Right click the mouse and a contextual menu will appear, choose "Browse". In the resulting File-Select dialog box, navigate and choose the method file (ending in ".mth") created earlier. Click on the Select button. The path and name of the new method file will replace the default information in this cell. Right click this cell again and choose Fill Down. The new file name information will fill down to every cell in the "Method" column. Look for the "Study Name" column and click on the first cell in row 1 in this column. Note that this cell contains redundant information that is already in the Name column. Press the delete key to clear this cell. Right click the mouse and a contextual menu will appear, choose "Fill Down". Right click this cell again and choose Fill Down. This will clear every cell in the "Study Name" column. Choose menu item File > Save. Do not close this window yet.

(b) Position the mouse cursor over the first row number (in the Row column on the far left side of the window) that is NOT a calibrator. The cursor should be in the form of a fat plus sign. If it looks like small vertical double-ended arrow, move the mouse slightly up or down until it changes to a fat plus sign. Press and hold down the left mouse button and drag down across all the row numbers that are not calibrators. Check that you have not accidentally included calibrators, otherwise, deselect all the rows and try selecting again. Once you are sure that none of the calibrators are selected, choose menu item Edit > Delete. Repeat this process until only rows corresponding to calibrators are present in the sequence table. Click the cell in the first row in the "Type" column and a dropdown menu should appear. Choose "Cal:Replace". Right-click on the same cell and choose Fill Down. At this time, "Cal:Replace" should appear in every cell in the "Type" column.

(c) Inspect the Sequence Editor window for Excel-styled workbook tabs at the bottom. Locate the tab labeled "Calibration" (if you do not see it on first look, click on the small right arrow just left of the first tab, this will cause the tabs to "scroll" left and reveal additional tabs). Click on the top cell in the "Cal Level" column. A dropdown menu will reveal "S0", "S1", and "S2" through to "T7" menu choices. Moving down the column, for each calibrator you will need to assign its level by choosing correct menu item from the dropdown menu. When all calibrators are assigned their appropriate

level, click on the cell in the “Calib Rpt” column corresponding to “S7” calibrator. A pop-down menu should appear; choose “Short”. Likewise, change the “Calib Rpt” for “T7” from “None” to “Short”. Choose menu item File > Save As. A window showing a Description field appears, just click OK and Save As dialog box will appear. Name the new sequence file the same name as the original sequence file except add the word “calib” to the end of the file name (be sure to separate the words by a space). Click the Save button. Then close the Sequence Editor window by choosing File > Exit from the menu bar.

9. In the TotalChrom™ Navigator window, choose the menu item Reprocess > Batch. A new window appears entitled “Batch Reprocessing”. Choose menu item File > Sequence and another window appears entitled “From Sequence”. Locate the top field labeled “Sequence file” and look for a button with an open folder icon immediately to the right of the field. Click this button and navigate, if necessary, to the folder containing the run’s sequence files. Click on the sequence file whose name ends with “calib.seq” and click the Open button. You will be returned to the previous window. Set each parameter in this window as shown in TABLE 9-9.

TABLE 9-9: TOTALCHROM™ NAVIGATOR – REPROCESS BATCH

Parameter Name	Parameter Setting
Starting Row	: 1
Ending Row	: <number of rows in sequence file>
Channel A	: Checked
Channel B	: Not Checked
Start Analysis	: Peak Detection
End Analysis	: Calibration
Batch Execution	: Interactive
Batch Printer	: None
Batch Plotter	: None
Enable Optional Reports in Method	: Not Checked
Use Method as Result File	: Grayed Out
Overwrite Existing Result Files	: Checked
Raw File Treatment	: Update existing raw file header with new sequence

10. Click the OK Button.
11. Choose menu item Reprocess > Start. The middle panel will contain a list of raw file waiting to be processed. Reprocessing of the chromatographic raw data will commence. The bottom panel in the window will update with each file’s name as it is processed. When processing is done, this panel will be clear of files. Close this window.
12. In the TotalChrom™ Navigator window, choose the menu item Build > Method and open the method file for this run. If you get an error message telling you that you can only open this in read-only mode, then unlock the files by doing these steps:
 - (a) Click “No” to cancel the error message. Select File > Exit to close the Method Editor.
 - (b) In TotalChrom Navigator, select Admin > CAM Administration.
 - (c) In the CAM Admin Tool window, click in the file explorer-like window on top of the “+” sign in front of “TotalChrom Servers” to expand it. Click on the server name. A list

of files will reveal themselves in the right-hand window panel.

(d) Click on the first file, hold down the shift key and click on the last file in the list. This will highlight all the files in the list. Press the keyboard's "delete" key. This does not delete the actual files but only unlocks them.

(e) Select File > Exit in the CAM Admin Tool window to close it.

(f) Return to Method Editor window by selecting Build > Method in the TotalChrom™ Navigator window. Begin this step again.

13. Return to the menu bar and choose Window > Component List. Position the mouse on the any of the four corners or edges of the Component List window until the mouse cursor turns to a double-headed arrow. Expand the window until it fills its parent window.
14. The Component List window is divided into three panels. The left panel lists each component by peak number, retention time and component name. Clicking on any of the components will reveal that component's calibration data and calibration curve in the middle and right panels, respectively. Consecutively click on each component one at a time and individually inspect each component's calibration curve. It is important to note whether the calibration curve meets requirements for linearity, slope and intercept.
 - (a) Watch for calibration points that obviously fail to display their expected Response Ratio (i.e. fall away from the regression line compared to their neighboring points). Typically, a point with a Response Ratio equal to zero indicates that a component peak was missed during peak identification phase of calibration processing. Likewise, a point that falls far from the calibration curve might be because that component's peak was misidentified (perhaps confused for another component). Inspection of nearby eluting component's calibration curve might reveal an oppositely misaligned point for the same calibration level. Return to Graphic Editor and alter the retention time windows as necessary, so all peaks will be correctly identified upon reprocessing.
 - (b) While the regression line does not have to intersect every point, be especially mindful of "R-squared" value at the top left of the right panel. R-squared must exceed 0.990 ("two nines") for each component. R-squared values >0.999 is common for this procedure.
 - (c) Corrective action will need to be taken in any case of failure in the above rules.
15. If the calibration curves pass inspection, close Method Editor.
16. In the TotalChrom™ Navigator window, choose the menu item Reprocess > Batch to reopen the "Batch Reprocessing" window. Choose File > Sequence and click the button with the open folder icon located right of the field labeled "Sequence file". Navigate, if necessary, to the folder containing the run's sequence files and click on the other sequence file which name does not contain "calib". Click the Open button. Upon return to the previous window, set End Analysis to "Quantitation" and Batch Printer to "None". Change Batch Execution to "Background" or anything other than "Interactive". All other parameters should remain unchanged.
17. Click the OK Button. The front window will close and reprocessing of the chromatographic raw data will commence.
18. In the TotalChrom™ Navigator window, choose the menu item Reprocess > Results. A new window should open called "Reprocess Results". If you get an error message telling you that you can only open this in read-only mode, then unlock the files (follow the procedure described in step 4 of this section). Select from the menu File > Open. In the open file dialog box, click on the "Files of type:" dropdown menu and select

- "IDX files (*.idx)". Navigate to the folder containing this run's data and click on the newest file (in the format of "As<yymmdd>-<today's date>-<time of reprocessing>"). Click Open. In the Reprocess Results window will be presented a chromatogram for the first sample in the sequence. Carefully inspect the chromatogram one peak at a time for correct peak identification and accurate baseline. If you are satisfied that there are no integration problems, proceed to the next sample's chromatogram by selecting File > Next File from the menu bar. Examine all chromatograms in this manner and make corrections in peak identity and integration as necessary. Make notes concerning issues encountered with individual chromatograms and changes that were made. If a chromatogram is changed or edited in any way, be sure to select File > Save to save your changes. See the chapter entitled "Developing Processing Parameters in the Method" in the PerkinElmer *TotalChrom™ Workstation Users Guide* for a detailed explanation on how to use integration events to optimize the integration of a chromatogram. After review of each and every chromatogram, select File > Exit from the Reprocess Results menu bar.
19. Repeat step 18 except set both Start and End Analysis to "Report Generation". Set Batch Printer to "FindPrint Factory Pro". A new window will open entitled "pdFactory Pro: <##> Jobs (## pages, ### Kb)". When reprocessing has completed, click the Save button on the pdFactory Pro window. In the Save As dialog box that appears, navigate to the run's data folder and create a new pdf file named "As<yymmdd> report". Be sure to include a space between "report" and the first word of the new file. Click the Save button. This pdf file is to be kept and backed up, for archival purposes, in the same folder with all the other chromatographic data files for this run. Click the "Close" button to close pdFactory Pro window.
 20. The following steps need only to be done one time during the first steps up of the software, or if the file "Arsenic1.sum" is lost or corrupted. In this case, do the following steps exactly:
 - (a) In the TotalChrom™ Navigator window, choose the menu item Reprocess > Summary and a new window entitled "Summary" will open. Choose menu item File > Edit Format in this window. A mockup of the default report format will now present itself.
 - (b) Choose menu item User Notes > Title and entirely delete all of the text in the data field by pressing your keyboard's Backspace key. Check to be sure the text insert cursor is flashing at the very left of the data field and there are no invisible spaces present, then click the OK button.
 - (c) Choose Sample Data > Sample Name and a dialog box will appear with data fields and a variety of buttons. Click the Delete button. (Do not be alarmed that Sample Name is being deleted. File Name is present in the default summary report which will be retained and used to identify each sample.)
 - (d) Choose Sample Data > Study Name and in that dialog box change Column Width to 8, and set Bottom Label to "ID" (do not include quotes). Click the Replace button.
 - (e) Choose Component Data > Adjusted Amount and change Column Number to 3, Top Label to "Amount" and Bottom Label to "µg/L". Click the Move button.
 - (f) Choose Component Data > Peak Area and change Column Number to 4, and Bottom Label to "[cps*min]". Click the Move button.
 - (g) Choose Component Data > Retention Time and in that dialog box change Top Label to "RT". Click the Replace button.
 - (h) In the Summary window menu bar, click on Options. In the new dialog box, remove the check marks for all check boxes except the check boxes for

“Automatically arrange components” and “Store report in an ASCII formatted file”. Make sure the radio button entitled “.CSV file (for Microsoft Excel)” is highlighted. In the File Name field, type “Summary”. In the Area Reject field, enter 50. Click the OK button.

(i) In the Summary window, choose menu item File > Save As, in the dialog box that appears you may enter descriptive comments (though it is not necessary to do so) then click the OK button. A new dialog box appears giving the opportunity to save the file. Navigate to C:\HPLC\Methods folder and save the new file as “Arsenic1.sum”.

21. If it is not already open, open the Summary window by choosing the Reprocess > Summary menu item in the TotalChrom™ Navigator window. Select Results > From Sequence from the menu bar and a “Results from Sequence File” dialog box will open. Click on the open folder icon on the right side of the field named “Sequence File”. Navigate to the folder containing the run’s sequence files and click on the file which name does not contain “calib”. Click the Open button. Click on the open folder icon on the right side of the field named “Report Format File” then navigate to the folder C:\HPLC\Methods and click on “Arsenic1.sum”. Click the Open button. Be sure that “Load files from channel A” and “Load component list from method” checkboxes are checked. Next, click the Print button. The dialog box will close and you will return to previous window where the rapidly updating message line at the bottom of the window will indicate the process of summary report generation. When finished, a new dialog box will appear giving you the opportunity to print the report. It is not necessary to print the report (though there is no harm done if it is) because a text file of the summary results was automatically saved during processing in the same folder where the run’s data resides. Click the Cancel button, then select File > Exit from the Summary window’s menu bar.
22. Open Microsoft Excel and choose File > Open. In the open file dialog box, navigate and to the folder containing the run’s data files. In the dropdown menu named “Files of type:” select “Text Files”. Then proceed to find and select the “Summary.csv” file. Click Open. An Excel worksheet will open containing the data generated during the Summary processing step. In Excel, choose HPLC > Transform HPLC Data from the menu bar. Immediately a macro will run that will transform the data into a format that is easily exported into the database. Just before the macro finishes, a Save As dialog box will open giving you the opportunity to save the file as an Excel workbook. Give the file a name as follows: “As<yymmdd> results”. The multi-tabbed Excel workbook contains a worksheet suitable for data exportation to the MS SQL Server 7™ database. Clicking on additional tabs will show worksheets for (a) summary table for easy visual review of the data, (b) instrument stability chart showing degree of consistency of internal standard peak areas plotted as a function of injection #, (c) calibration data with regression statistics for each arsenic species, and (d) plotted calibration curves for each arsenic species.
23. The data processing portion on the instrument controller computer is now complete. At this point you may close Microsoft Excel® and TotalChrom™ Navigator.

10. RECORDING OF SAMPLE AND QC DATA

a. Transferring the Data to the Central Database

1. Transfer the “As<yymmdd> results”.xls file via floppy disk, recordable CD-R or other data media to the appropriate subdirectory on the network drive where exported data are stored. (Note that directories are named according to instrument/year/month/ and study name or ID, for example,

"I:/Instruments/ELAN_DRC2D/2003/08/As030123 Results - Study 2003-01".)

2. From a computer that has access to Microsoft Access™ or MS SQL Server 7™ database used for tracking data, log in using your user ID and password. After you log into the database, open the FrontEndSet folder in the GO TO window.
3. Click the "Add Sample Results to Database" button. New buttons will appear. Click the "Import Instrument Data File" button. For "Instrument", choose "ELAN-DRC2D" (or the appropriate instrument). For "Assay", choose "As Speciation". Enter the appropriate run date, run number, analyst, and StudyRefID for these fields. Enter "µg/L" for the "Units" field. It is not necessary to fill-in the "IS Lot Number" Field. Select the location of the data file on the network drive and press the "Open" button.
4. In the "Imported Results" table, pressing the "Find X's" button will show only those samples whose sample ID is not recognized as a valid QC pool ID or sample ID for this study. (Sample IDs are set up when the study is logged into the database.) If necessary, corrections to sample IDs and dilution factors can be made in this table (e.g., correction of transcription errors and adjustment for level of dilution). If samples were diluted for analysis, both the sample ID and the dilution factor need to be edited in this table before the values are transferred to the database. First, change the dilution factor to reflect the way that the sample was analyzed then edit the sample ID to remove any comments about the level of dilution at which the sample was analyzed. (The replace command is useful here.)
5. When corrections to sample IDs are made, press the "Recheck" button to evaluate the sample IDs. Any sample or analyte row marked "Not Recognized" will not be transferred to the database when the "Transfer" button is pressed.

b. QC Data

Store the results of the QC samples analyzed in each run in the Microsoft Access™ (or MS SQL Server 7™) database when all other data for the run is imported from the ELAN® software. Refer to "Recording of Data" described above for how to import data into the Microsoft Access™ database.) The database allows for the printing of several types of QC reports. Print one of these reports and keep it in the analyst's laboratory analysis notebook for future reference. Keep another copy with the analysis printouts from the run.

11. FINAL REVIEW OF THE DATA

a. Analysis Printouts and Analyst Run Report

Bind the analysis printouts with a printout of the calibration curve and curve statistics and place them in the study folder(s). Store the results of the patient samples analyzed in each run in the Microsoft Access™ (or MS SQL Server 7™) database when all other data for the run is imported from the ELAN® software. Refer to "Recording of Data" described above for how to import data into the Microsoft Access™ database.) The database allows for the printing of a run summary report that indicates whether any particular patient-sample results are outside of the normal concentration reference range or whether any measurement failed precision limits. Print one of these reports and keep it in the analyst's laboratory analysis notebook for future reference. Keep another copy with the analysis printouts from the run. (Refer to "Recording of Data" described above for how to import data into the database to print out a customized sample report.)

b. Plotting QC Results

When the Microsoft Access™ or MS SQL Server 7™ database is used QC plots are updated automatically when the data are imported into the database. Monitor these plots regularly for any trends in the bench QC results. If trends are observed, contact the laboratory supervisor.

c. Supervisor Review

The Microsoft Access™ or MS SQL Server 7™ database allows the supervisor to review the QC and sample results directly in the database. After the supervisor reviews the data, file the paper printouts from the analysis run in the study folder(s).

12. REPLACEMENT AND PERIODIC MAINTENANCE OF KEY COMPONENTS

a. ICP-MS Maintenance

Part numbers listed below are PerkinElmer part numbers from their *2000/2001 Consumables Catalog*.

1. Autosampler probe assembly (part # B300-0161.) Keep one spare on hand.
2. Peristaltic pump tubing for sample (0.03 inch i.d., part #0990-8587), rinse station (can use either same tube type as for sample or 0.045-inch i.d., part #N0680375) and for waste (0.125-inch i.d., part #N812-2012): Keep at least 6 packages of 12 on hand of the sample tubing, 6 for rinse station and 2 packages of 12 on hand of the waste tubing. Other suppliers may offer the same size/type of peristaltic tubing.
3. Nebulizer capillary tubing (used to connect the nebulizer and the peristaltic pump tubing, part #0990-8265 or any source of polyethylene tubing, 0.6 mm i.d. x 0.97 mm o.d.). Keep one pack (10 feet) on hand.
4. GemTip Cross-Flow II Ryton Nebulizer Assembly (part #N812-0516). Keep at least one spare on hand.
5. Cross-Flow II Replacement GemTips (part #N812-0515). Keep at least two spare pairs on hand (one pair = one tip for liquid + one tip for gas).
6. Cross-Flow II Replacement Liquid and Gas Tip Ferrules (part #09920518 and #09920515, respectively). Keep at least two spares on hand.
7. Cross-Flow II Replacement Liquid and Gas O-Rings (part # 09921045). Keep at least five spare pairs on hand.
8. Ryton Spray Chamber Kit (part #N812-0124). One spare kit should be on hand; the large O-ring (part #WE01-3060), retaining ring (part #WE01-4081), and right-angled drain connector (part #WE01-3119) can be ordered individually. One spare of each should be kept on hand.)
9. Injector Support/Torch Base (part #N812-0116). Keep one spare on hand.
10. Torch O-Ring Kit (packages of four, part #N812-0100). Keep four spare packages on hand.
11. Quartz torch. At least two spare torches should be on hand (part #N812-2006).
12. Alumina 2.0-mm i.d. sample injector (part #N812-6041). At least two spare injectors

should be on hand.

13. RF coil (part #WE02-1816). One spare should be on hand.
14. Nickel Skimmer (part #WE02-1137) and sampler cones (part #WE02-1140). Keep at least two spares of each on hand.
15. Skimmer and sampler cone O-rings (part #N812-0512 and #N812-0511, respectively). Keep at least 10 spares of each on hand.
16. Series II replacement Ion lens (part #WE018034). Keep two spares on hand.
17. Pump oil for the roughing pump (part #N812-2004). Keep four bottles on hand.
18. Polyscience chiller coolant (PE Sciex Coolant, part #016558A): Two 1-L bottles should be kept on hand.
19. If possible, have a backup A/S 93 autosampler and Polyscience chiller. See a PerkinElmer sales representative for part numbers.

13. LIMIT OF DETECTION

The limits of detection (LOD) for arsenic species in urine specimens is based on three times the concentration standard deviation of approximately 20 or more low concentration samples, each analyzed in a separate run. This represents the method detection limit. Report results below the detection limit as “< LOD” (where “LOD” is the calculated lowest detection limit). The LOD calculation is reevaluated at least twice a year.

TABLE 13-1: LIMITS OF DETECTION (LOD) FOR ARSENIC SPECIES

Species Chemical Name	Abbreviated Name	Limit of Detection, $\mu\text{g/L}$
Arsenobetaine	AB	0.4
Arsenocholine	AC	0.6
Trimethylarsine oxide	TMAO	1.0
Monomethylarsonic acid	MMA	0.9
Dimethylarsinic acid	DMA	1.7
Arsenous (III) acid	As(III)	1.2
Arsenic (V) acid	As(V)	1.0

14. REPORTABLE RANGE OF RESULTS

Urine arsenic results are reportable in the range of greater than the LOD, where LOD is the calculated lower detection limit. Dilute results greater than the range of the calibration standard concentrations ($150 \mu\text{g/L}$) appropriately and reanalyze so that the results fall within the concentration range covered by the calibration standards. Dilute urine samples by adding the appropriate volume of $18 \text{ M}\Omega\text{-cm}$ water (e.g., for a 1:2 dilution, prepare the sample by mixing $500 \mu\text{L}$ of urine and $500 \mu\text{L}$ of $18 \text{ M}\Omega\text{-cm}$ water).

15. SPECIAL PROCEDURE NOTES – CDC MODIFICATIONS

None applicable for this operation.

16. QUALITY CONTROL PROCEDURES

The Inorganic Toxicology and Nutrition Branch uses the method described in this protocol for environmental and occupational health screening studies.

This analytical method uses two types of Quality Control (QC) systems: With one type of the QC system, the analyst inserts bench QC specimens two times in each analytical run (a set of consecutive assays performed without interruption) so that judgments may be made on the day of analysis. With the other type of QC system, “blind” QC samples are placed in vials, labeled, and processed so that they are indistinguishable from the subject samples (as many as possible). The supervisor decodes and reviews the results of the blind specimens. With both systems, taking these samples through the complete analytical process assesses all levels of the analyte concentrations. The data from these materials are then used to estimate methodological imprecision and to assess the magnitude of any time-associated trends. The bench QC pools used in this method comprise two levels of concentration spanning the “low-normal” and “high-normal” ranges for each arsenic species. Both of these pools are analyzed after the calibration standards are analyzed but before any patient samples are analyzed so that judgments on the arsenic species calibration curves may be made before analysis of patient samples. These bench QCs should be analyzed again at the end of the run (no more than 20 samples). If a second run of ≤ 20 samples are analyzed using the same calibration curve as the first run, the QC results of obtain from the second run’s own bench QC samples need to be analyzed and treated independent of the first run.

a. Establish QC limits for each QC pool.

Perform an analysis of the mean and standard deviation for each pool from the concentration results observed in at least 20 characterization runs. During the 20 characterization runs, previously characterized QCs or pools with target values assigned by outside laboratories to evaluate each run’s QC. In addition to providing QC limits, the characterization runs also serve to establish homogeneity of the pools. After the homogeneity of the bench materials is established, analysis by another independent reference method (e.g., isotope dilution mass spectroscopy) is useful.

b. Precision and Accuracy

QC Results Evaluation. After completing a run, consult the QC limits to determine whether the run is “in control.” *The QC rules apply to the average of the beginning and ending analyses of each of the bench QC pools.* The QC rules are as follows:

1. If both the low-and the high-QC results are within the 2s limits, accept the run.
2. If one of two QC results is outside the 2s limits, apply the rules below and reject the run if any condition is met.
 - 1_{3s} – Average of both low QCs OR average of both high QCs is outside of a 3s limit.

- **2_{2s}** – Average of both low QCs AND average of both high QCs is outside of 2s limit *on the same side of the mean*.
- **R_{4s} sequential** – Average of both low QCs AND average of both high QCs is outside of 2s limit *on opposite sides of the mean*.
- **10_{xs} sequential** – The previous nine average QC results (for the previous nine runs) were *on the same side of the mean* for either the low OR high QC.

If the run is declared “out of control,” the analysis results for all patient samples analyzed during that run are invalid for reporting.

c. Sample Results Precision Evaluation

If the range of the three replicate readings (maximum replicate concentration value, minimum replicate concentration value) for a single sample analysis is greater than 30% of the mean of the three replicates, the analysis of that sample should be repeated.

d. Remedial Action If Calibration or QC Systems Fail to Meet Acceptable Criteria

If an analyte result for a QC material falls outside of the 99% limits for mean or range, the following steps should be taken, if possible:

- Check the chromatograms for each blank, calibrator, QC, and sample for proper peak integration and identification. Check that the internal standard peak was properly integrated and identified. Change integration parameters or manually reintegrate peaks, if necessary, and reprocess the run in TotalChrom™.
- Check the ICP-DRC-MS stability during the run by examining the degree of variability and drift in internal standard raw peak areas over the course of the run. Irreproducibility that exceeds 15% and drift >20%, or sudden large changes in internal standard peak area, likely indicates that there was a problem in plasma stability.
- Setup a new run for the reanalysis of the patient samples affected by the previous failed run. Be sure to use freshly prepared calibrators and QC material.
- If these three steps do not result in correction of the out-of-control values for QC materials, consult the supervisor for other appropriate corrective actions. No analytical results should be reported for runs that are not in statistical control.

17. LIMITATIONS OF METHOD; INTERFERING SUBSTANCES AND CONDITIONS

The argon chloride (ArCl) interferences on arsenic (⁷⁵As) are eliminated by the operation of the DRC™ under the parameters noted in the sections above during the speciated arsenic analysis.

18. REFERENCE RANGES

The reference range for each arsenic species (see TABLE 18-1) is based on literature reports and from periodic review of accumulated data collected during the analysis of urine samples representing a normal, healthy population believed to be free of unusual exposure to arsenic. Where data is absent or scant, reference ranges are based on the scientific literature, if available.

TABLE 18-1: REFERENCE RANGES FOR ARSENIC SPECIES

Species Chemical Name	Reference Range ¹ , µg/L
Arsenobetaine	<LOD – 7.9
Arsenocholine	<LOD
Trimethylarsine oxide	<LOD
Monomethylarsonic acid	<LOD – 7.1
Dimethylarsinic acid	1.8 – 12.2
Arsenous (III) acid	<LOD – 2.5
Arsenic (V) acid	<LOD – 3.2

¹ There are no established reference ranges for arsenic species. Above ranges are estimates based on CDC unpublished data. 5-95 percentile of randomly selected NHANES 2002 samples n=48.

19. ACTION-LEVEL RESULTS

If a patient sample has a non-dietary arsenic concentration greater than 50 µg/L, report the levels by fax, telephone, or E-mail to the supervising physician or principal investigator.

20. SPECIMEN STORAGE AND HANDLING DURING TESTING

Specimens may reach and maintain ambient temperature during analysis. Take stringent precautions to avoid external contamination. After the samples are analyzed, return them to ≤ -20°C freezer storage as soon as possible.

21. ALTERNATE METHODS FOR PERFORMING TEST AND STORING SPECIMENS IF TEST SYSTEM FAILS

If the analytical system fails, freezer storage (≤ -20°C) is recommended until the analytical system is restored functionality.

22. TEST-RESULT REPORTING SYSTEM; PROTOCOL FOR REPORTING CRITICAL CALLS (IF APPLICABLE)

Report test results as outlined in the *DLS Policies and Procedures Manual*. For critical calls, the supervisor should notify the supervising physician or principal investigator as soon as possible. The most expeditious means should be used (e.g., telephone, FAX, or E-mail).

23. TRANSFER OR REFERRAL OF SPECIMENS; PROCEDURES FOR SPECIMEN ACCOUNTABILITY AND TRACKING

The analyst who receives specimens or samples delivered to Inorganic Toxicology and Nutrition Branch (ITN) sets up a "Specimen Folder." Fill out a tracking form and place it in the folder to be given to the analyst performing the analysis. The form tracks location, status, and final disposition of the specimens. When sample analysis is completed, place the tracking form in the *Specimen Tracking Record Log Book* located in the trace-metals library.

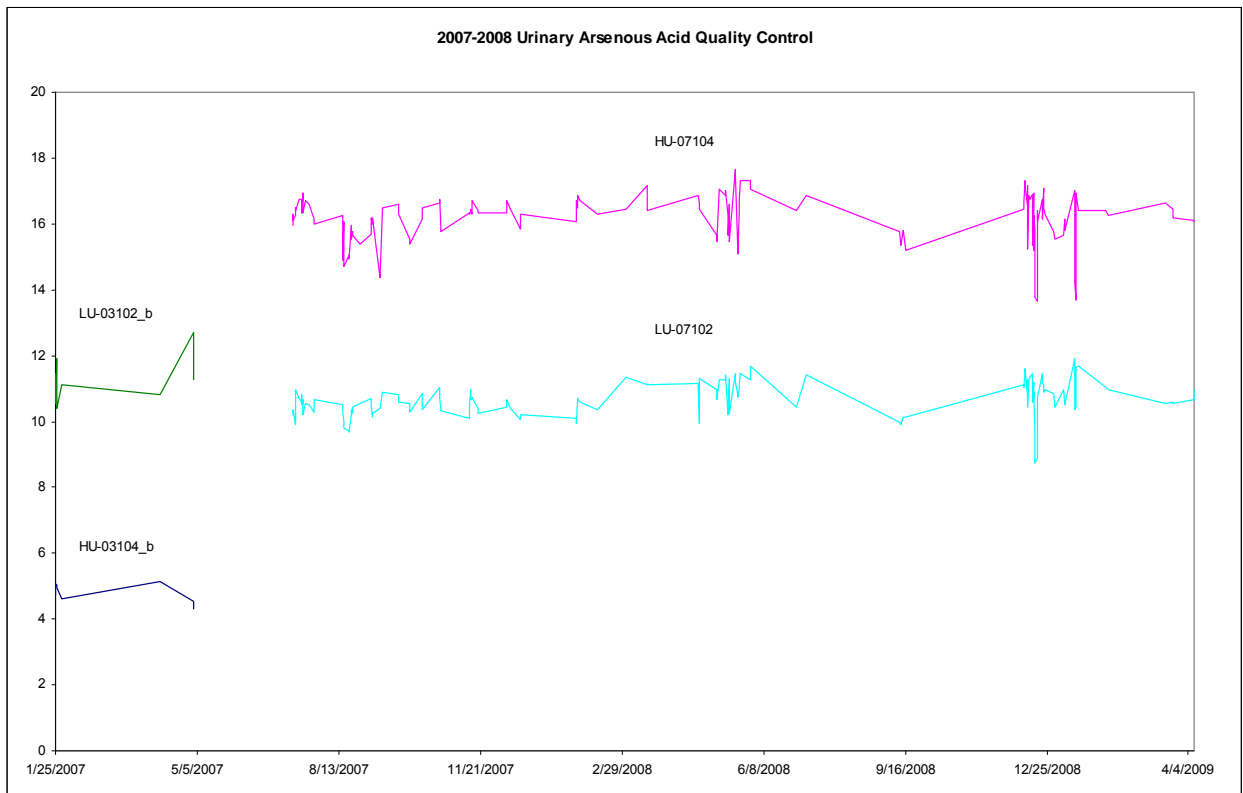
Use standard electronic record keeping means (e.g., Microsoft Access™, optical disk, or tape backup) to track specimens. Maintain records, including related quality assurance (QA) and QC data, for 3 years or longer. Keep duplicate records (off site, if sensitive or critical) in electronic or hardcopy format. Use only numerical identifiers (e.g., case ID numbers); all personal identifiers are available only to the medical supervisor or project coordinator to safeguard confidentiality.

24. SUMMARY STATISTICS AND QC GRAPHS

A. Urinary Arsenous Acid

Summary Statistics for Urinary Arsenous Acid by Lot

Lot	N	Start Date	End Date	Mean	Standard Deviation	Coefficient of Variation
HU-03104_b	8	1/25/2007	5/2/2007	4.794	0.302	6.3
LU-03102_b	8	1/25/2007	5/2/2007	11.269	0.756	6.7
LU-07102	139	7/12/2007	4/8/2009	10.661	0.523	4.9
HU-07104	139	7/12/2007	4/8/2009	16.203	0.717	4.4

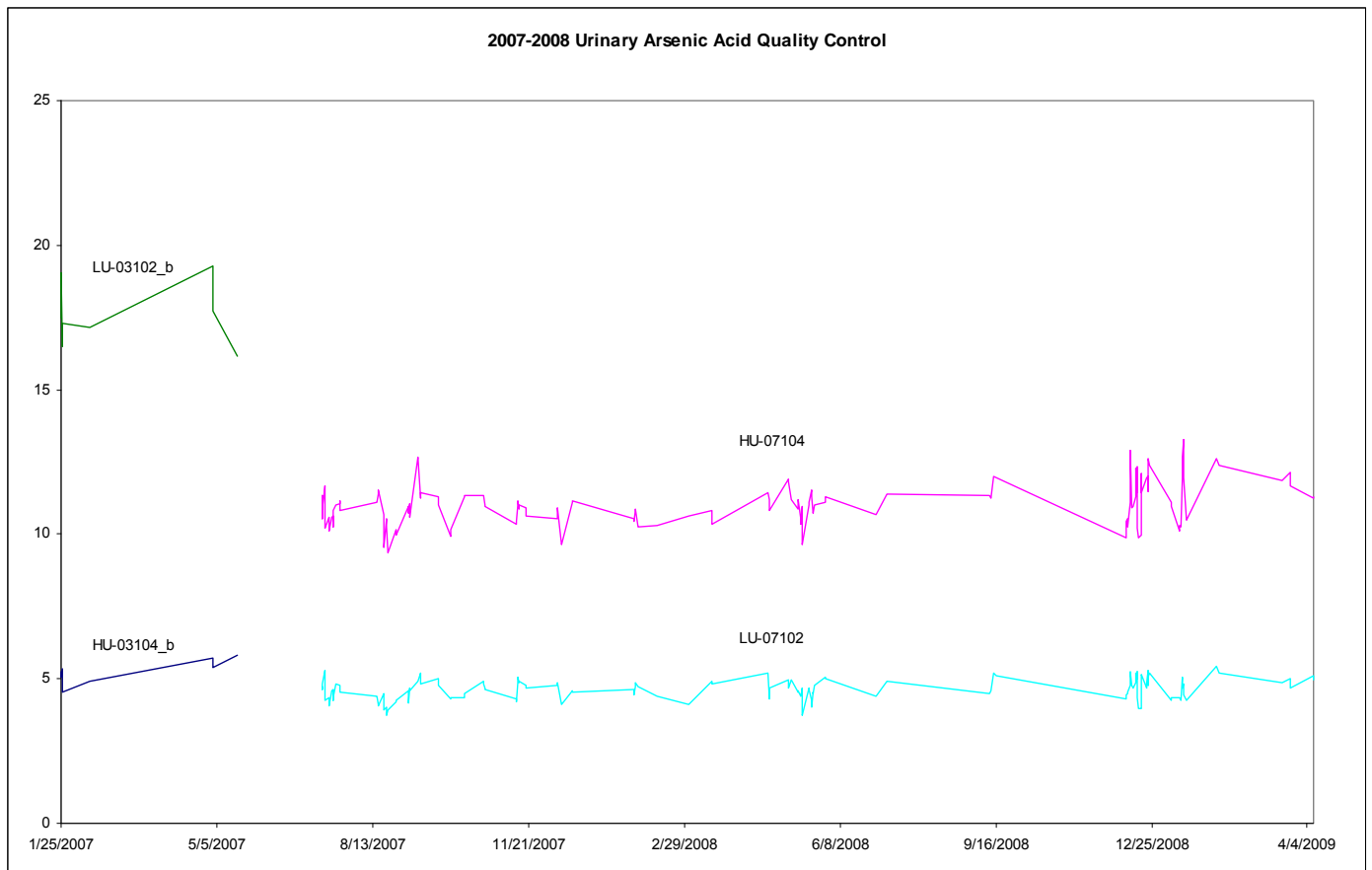


Urine arsenic species HPLC/ICP-DR/CMS (Formerly Arsenic species in Urine)
NHANES 2007-2008

B. Urinary Arsenic Acid

Summary Statistics for Urinary Arsenic Acid by Lot

Lot	N	Start Date	End Date	Mean	Standard Deviation	Coefficient of Variation
HU-03104_b	8	1/25/2007	5/18/2007	5.246	0.421	8.0
LU-03102_b	8	1/25/2007	5/18/2007	17.581	1.109	6.3
LU-07102	138	7/12/2007	4/8/2009	4.632	0.353	7.6
HU-07104	138	7/12/2007	4/8/2009	11.038	0.724	6.6

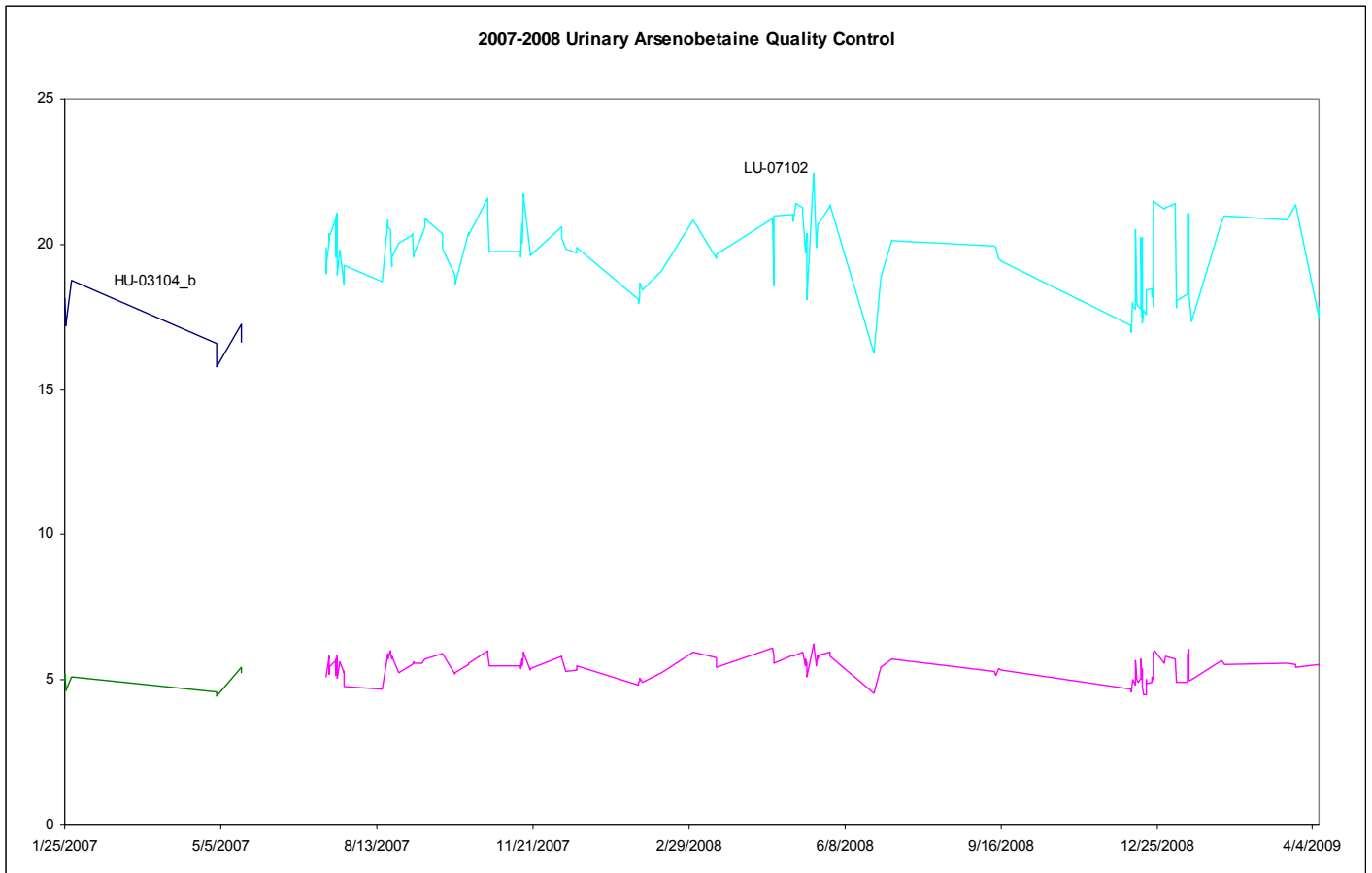


Urine arsenic species HPLC/ICP-MS (Formerly Arsenic species in Urine)
NHANES 2007-2008

C. Urinary Arsenobetaine

Summary Statistics for Urinary Arsenobetaine by Lot

Lot	N	Start Date	End Date	Mean	Standard Deviation	Coefficient of Variation
LU-03102_b	9	1/25/2007	5/18/2007	4.930	0.337	6.8
HU-03104_b	9	1/25/2007	5/18/2007	17.306	0.911	5.3
HU-07104	137	7/12/2007	4/8/2009	5.432	0.397	7.3
LU-07102	137	7/12/2007	4/8/2009	19.690	1.268	6.4

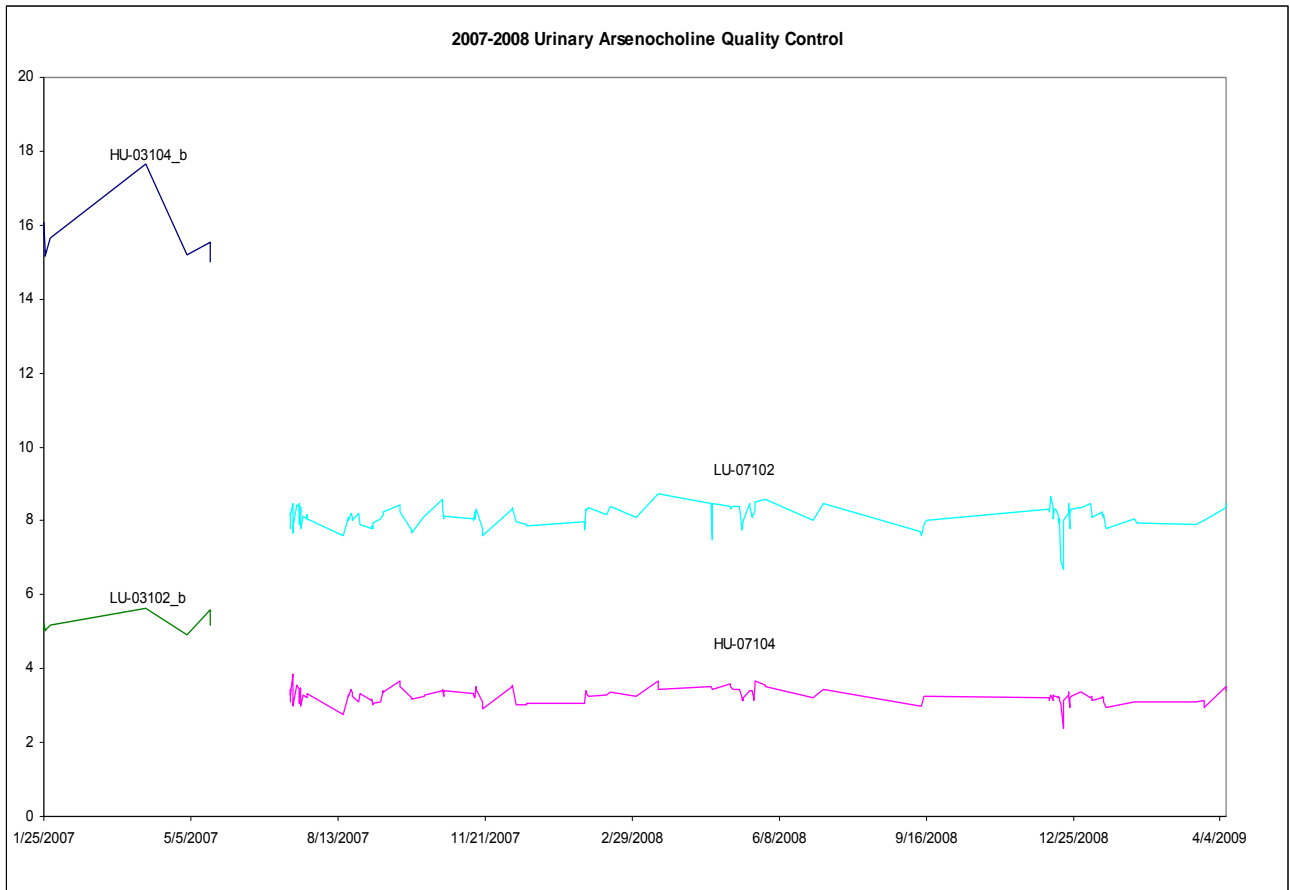


Urine arsenic species HPLC/ICP-DRS (Formerly Arsenic species in Urine)
NHANES 2007-2008

D. Urinary Arsenocholine

Summary Statistics for Urinary Arsenocholine by Lot

Lot	N	Start Date	End Date	Mean	Standard Deviation	Coefficient of Variation
LU-03102_b	9	1/25/2007	5/18/2007	5.205	0.256	4.9
HU-03104_b	9	1/25/2007	5/18/2007	15.694	0.803	5.1
HU-07104	138	7/12/2007	4/8/2009	3.263	0.192	5.9
LU-07102	138	7/12/2007	4/8/2009	8.120	0.302	3.7

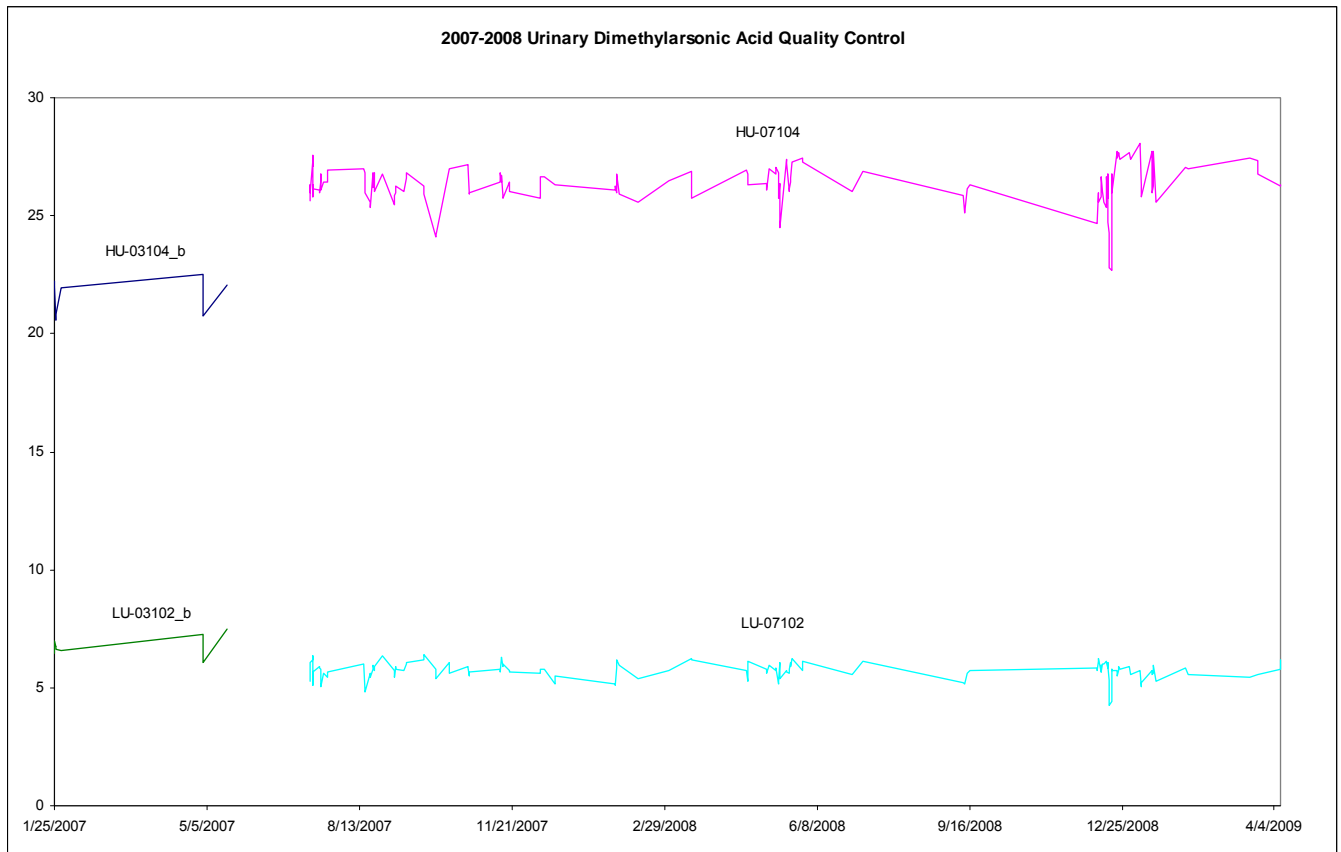


Urine arsenic species HPLC/PDRCMS (Formerly Arsenic species in Urine)
NHANES 2007-2008

E. Urinary Dimethylarsonic Acid

Summary Statistics for Urinary Dimethylarsonic Acid by Lot

Lot	N	Start Date	End Date	Mean	Standard Deviation	Coefficient of Variation
LU-03102_b	8	1/25/2007	5/18/2007	6.771	0.448	6.6
HU-03104_b	8	1/25/2007	5/18/2007	21.613	0.763	3.5
LU-07102	138	7/12/2007	4/8/2009	5.719	0.365	6.4
HU-07104	138	7/12/2007	4/8/2009	26.320	0.869	3.3

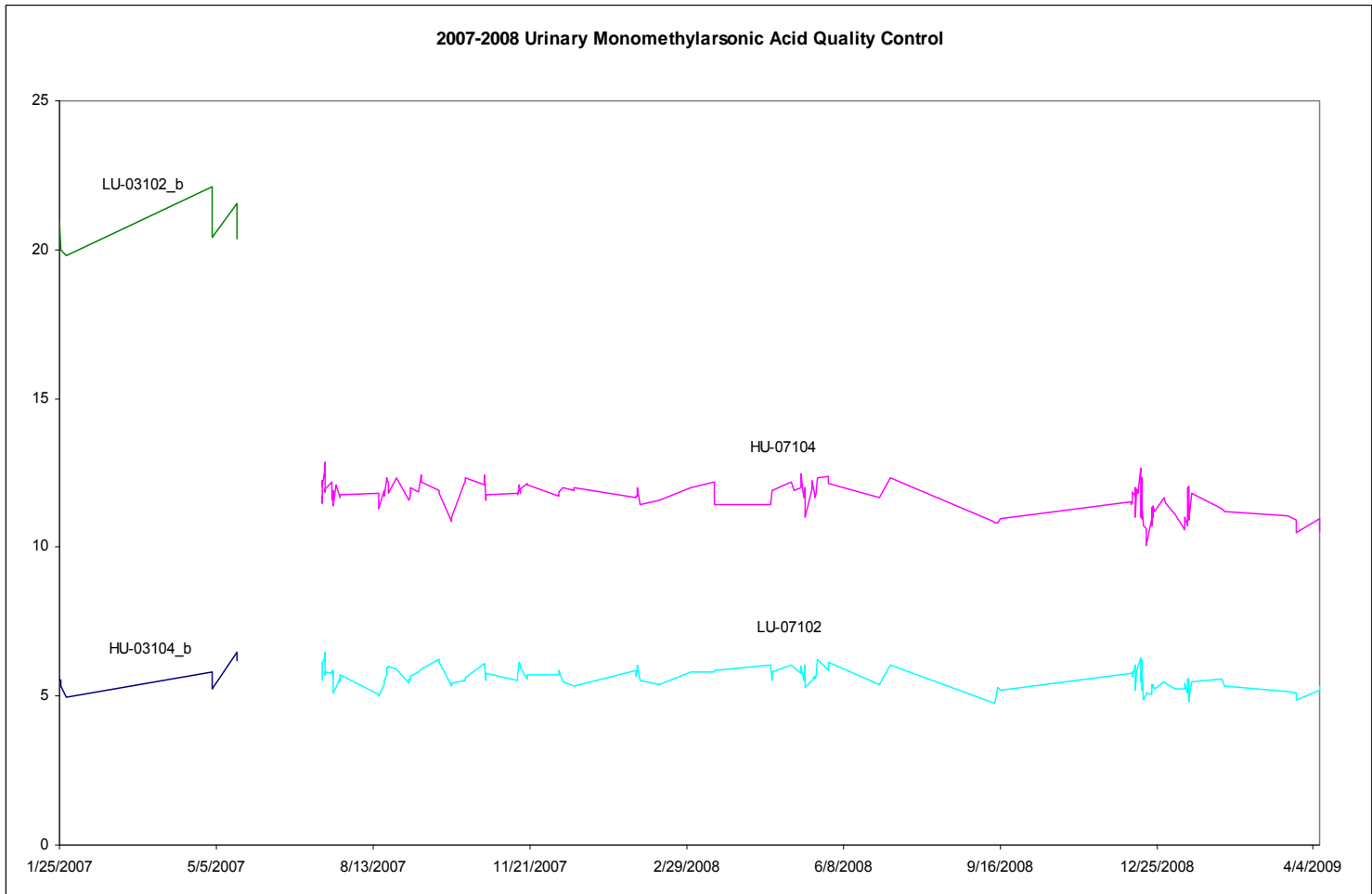


Urine arsenic species HPLC/PDRCMS (Formerly Arsenic species in Urine)
NHANES 2007-2008

F. Urinary Monomethylarsonic Acid

Summary Statistics for Urinary Monomethylarsonic Acid by Lot

Lot	N	Start Date	End Date	Mean	Standard Deviation	Coefficient of Variation
HU-03104_b	9	1/25/2007	5/18/2007	5.627	0.472	8.4
LU-03102_b	9	1/25/2007	5/18/2007	20.633	0.769	3.7
LU-07102	137	7/12/2007	4/8/2009	5.623	0.360	6.4
HU-07104	137	7/12/2007	4/8/2009	11.681	0.528	4.5

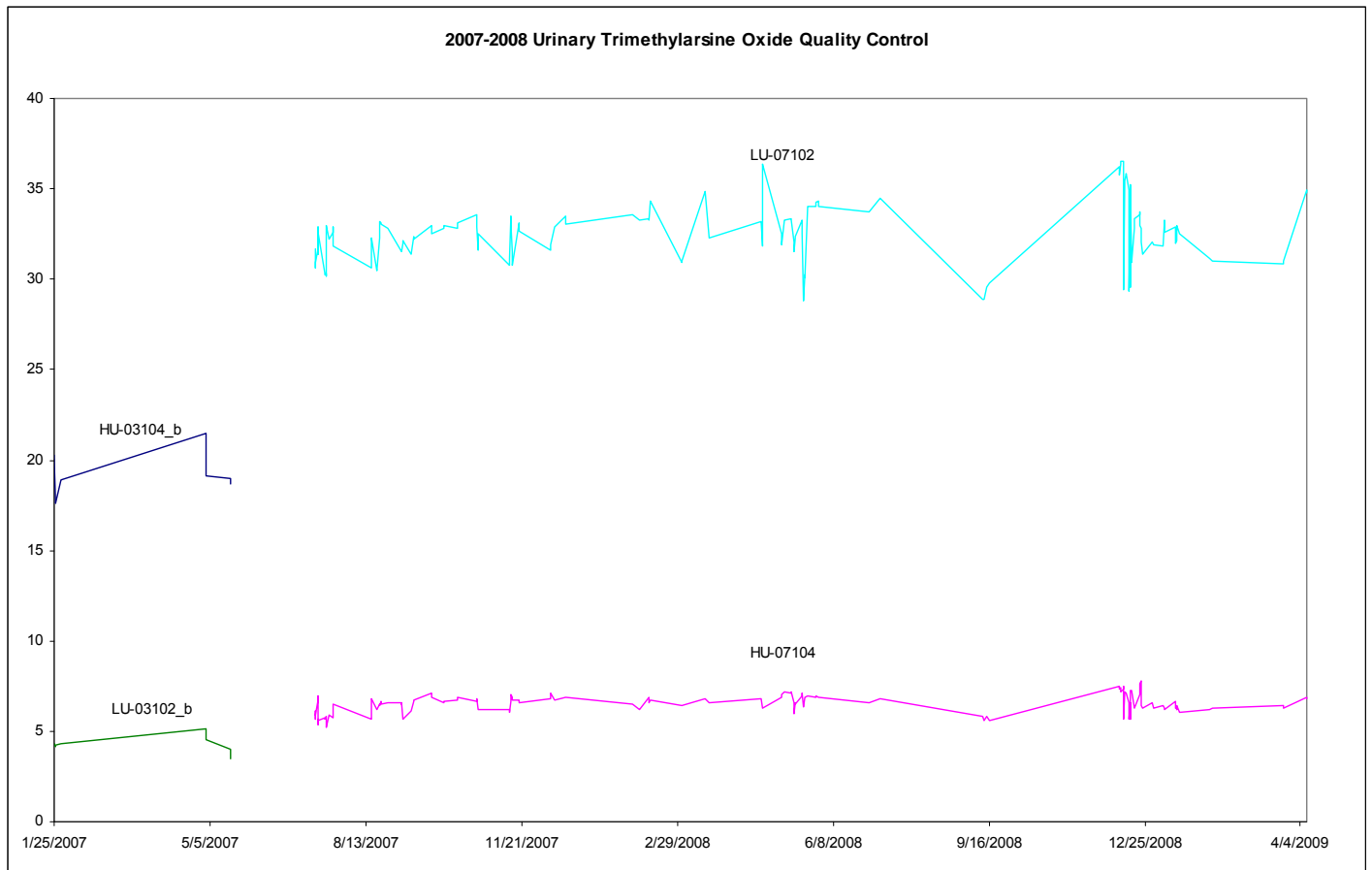


Urine arsenic species HPLC/ICP/DR/CMS (Formerly Arsenic species in Urine)
NHANES 2007-2008

G. Urinary Trimethylarsine Oxide

Summary Statistics for Urinary Trimethylarsine Oxide by Lot

Lot	N	Start Date	End Date	Mean	Standard Deviation	Coefficient of Variation
LU-03102_b	9	1/25/2007	5/18/2007	4.266	0.423	9.9
HU-03104_b	9	1/25/2007	5/18/2007	19.189	1.257	6.6
HU-07104	136	7/12/2007	4/8/2009	6.517	0.511	7.8
LU-07102	136	7/12/2007	4/8/2009	32.504	1.643	5.1

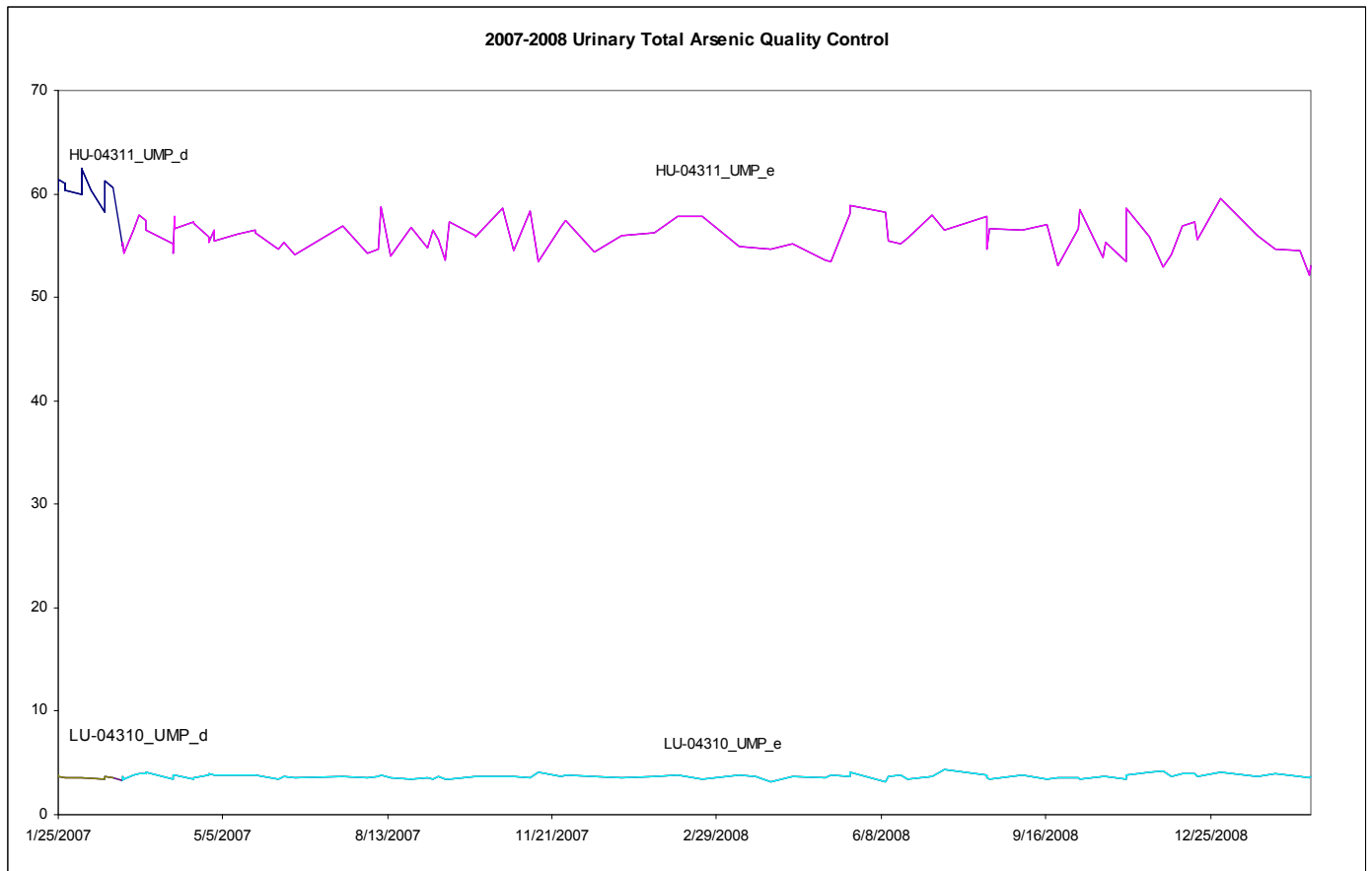


Urine arsenic species HPLC/ICP-DR/CMS (Formerly Arsenic species in Urine)
NHANES 2007-2008

H. Urinary Total Arsenic

Summary Statistics for Urinary Total Arsenic by Lot

Lot	N	Start Date	End Date	Mean	Standard Deviation	Coefficient of Variation
LU-04310_UMP_d	15	1/25/2007	2/27/2007	3.637	0.110	3.0
HU-04311_UMP_d	16	1/25/2007	2/27/2007	60.708	1.024	1.7
LU-04310_UMP_e	85	3/5/2007	2/24/2009	3.719	0.226	6.1
HU-04311_UMP_e	85	3/5/2007	2/24/2009	55.892	1.636	2.9



25. REFERENCES

1. Styblo M, Drobna Z, Jaspers I, Lin S, Thomas DJ. The role of biomethylation in toxicity and carcinogenicity of arsenic: a research update. *Environmental Health Perspectives*. 2002;110:767-71.
2. Sakurai T. Biological effects of organic arsenic compounds in seafood. *Applied Organometallic Chemistry* 2002;16:401-405.
3. Francesconi KA, Edmonds JS. Arsenic and marine organisms. *Advances in Inorganic Chemistry*, Vol. 44, 1997:147-189.
4. Kojima C, Sakurai T, Ochiai M, Kumata H, Qu W, Waalkes MP, et al. Cytotoxicological aspects of the organic arsenic compound arsenobetaine in marine animals. *Applied Organometallic Chemistry* 2002;16:421-426.
5. Sakurai T, Kaise T, Saitoh T, Matsubara C. Evaluation of in vitro cytotoxicity of tetramethylarsonium hydroxide in marine animals. *Applied Organometallic Chemistry* 1999;13:101-106.
6. Agency for Toxic substances and Disease Registry (ATSDR). Toxicological profile for arsenic. Atlanta, GA: Public Health service, 2000.
7. Hall AH. Chronic arsenic poisoning. *Toxicol Lett* 2002;128:69-72.
8. Ahsan H, Perrin M, Rahman A, Parvez F, Stute M, Zheng Y, et al. Associations between drinking water and urinary arsenic levels and skin lesions in Bangladesh. *J.Occup.Environ.Med.* 2000;42:1195-1201.
9. Anawar HM, Akai J, Mostofa KM, Safiullah S, Tareq SM. Arsenic poisoning in groundwater: health risk and geochemical sources in Bangladesh. *Environ Int* 2002;27:597-604.
10. Das D, Chatterjee A, Mandal BK, Samanta G, Chakraborti D, Chanda B. Arsenic in ground water in six districts of West Bengal, India: the biggest arsenic calamity in the world. Part 2. Arsenic concentration in drinking water, hair, nails, urine, skin-scale and liver tissue (biopsy) of the affected people. *Analyst* 1995;120:917-924.
11. Hsueh YM, Huang YL, Huang CC, Wu WL, Chen HM, Yang MH, et al. Urinary levels of inorganic and organic arsenic metabolites among residents in an arseniasis-hyperendemic area in Taiwan. *J.Toxicol.Environ.Health A* 1998;54:431-444.
12. Kreiss K, Zack MM, Landrigan PJ, Feldman RG, Niles CA, Chirico-Post J, et al. Neurologic evaluation of a population exposed to arsenic in Alaskan well water. *Arch.Environ.Health* 1983;38:116-121.
13. Valentine JL, Kang HK, Spivey G. Arsenic levels in human blood, urine, and hair in response to exposure via drinking water. *Environ.Res.* 1979;20:24-32.
14. Lewis DR. Dopant materials used in the microelectronics industry. *Occup Med* 1986;1:35-47.

Urine arsenic species HPLC/ICP/MS (Formerly Arsenic species in Urine)
NHANES 2007-2008

15. Horng CJ, Tsai JL, Lin SR. Determination of urinary arsenic, mercury, and selenium in steel production workers. *Biol.Trace Elem.Res.* 1999;70:29-40.
16. Vahter M. Environmental and occupational exposure to inorganic arsenic. *Acta Pharmacol.Toxicol.(Copenh)* 1986;59 Suppl 7:31-34.
17. Hwang YH, Chen SC. Monitoring of low level arsenic exposure during maintenance of ion implanters. *Arch.Environ.Health* 2000;55:347-354.
18. Apostoli P, Alessio L, Romeo L, Buchet JP, Leone R. Metabolism of arsenic after acute occupational arsine intoxication. *J.Toxicol.Environ.Health* 1997;52:331-342.
19. Battista G, Bartoli D, Iaia TE, Dini F, Fiumalbi C, Giglioli S, et al. Art glassware and sinonasal cancer: report of three cases. *Am.J.Ind.Med.* 1996;30:31-35.
20. Aitken I. Arsenic poisoning associated with the burning of arsenic-treated timber. *P.N.G.Med.J.* 1976;19:103-104.
21. Gollop BR, Glass WI. Urinary arsenic levels in timber treatment operators. *N.Z.Med.J.* 1979;89:10-11.
22. Nygren O, Nilsson CA, Lindahl R. Occupational exposure to chromium, copper and arsenic during work with impregnated wood in joinery shops. *Ann.Occup.Hyg.* 1992;36:509-517.
23. Rosenberg MJ, Landrigan PJ, Crowley S. Low-level arsenic exposure in wood processing plants. *Am.J.Ind.Med.* 1980;1:99-107.
24. Takahashi W, Pfenninger K, Wong L. Urinary arsenic, chromium, and copper levels in workers exposed to arsenic-based wood preservatives. *Arch.Environ.Health* 1983;38:209-214.
25. Peters HA, Croft WA, Woolson EA, Darcey B, Olson M. Hematological, dermal and neuropsychological disease from burning and power sawing chromium-copper-arsenic (CCA)-treated wood. *Acta Pharmacol Toxicol (Copenh)* 1986;59 Suppl 7:39-43.
26. Brown RM, Newton D, Pickford CJ, Sherlock JC. Human metabolism of arsenobetaine ingested with fish. *Hum Exp Toxicol* 1990;9:41-6.
27. Kaise T, Horiguchi Y, Fukui S, Shiomi K, Chino M, Kikuchi T. Acute Toxicity and Metabolism of Arsenocholine in Mice. *Applied Organometallic Chemistry* 1992;6:369-373.
28. Kaise T, Ochi T, Oya-Ohta Y, Hanaoka K, Sakurai T, Saitoh T, et al. Cytotoxicological aspects of organic arsenic compounds contained in marine products using the mammalian cell culture technique. *Applied Organometallic Chemistry* 1998;12:137-143.
29. Kaise T, Watanabe S, Itoh K. The Acute Toxicity of Arsenobetaine. *Chemosphere* 1985;14:1327-1332.
30. Marafante E, Vahter M, Dencker L. Metabolism of arsenocholine in mice, rats and rabbits. *Sci.Total Environ.* 1984;34:223-240.
31. Yamauchi H, Kaise T, Yamamura Y. Metabolism and excretion of orally administered arsenobetaine in the hamster. *Bull Environ Contam Toxicol* 1986;36:350-5.

Urine arsenic species HPLC/ICP-DRC/MS (Formerly Arsenic species in Urine)
NHANES 2007-2008

32. Tam GK, Charbonneau SM, Bryce F, Pomroy C, Sandi E. Metabolism of inorganic arsenic (74As) in humans following oral ingestion. *Toxicol Appl Pharmacol* 1979;50:319-22.
33. Pomroy C, Charbonneau SM, McCullough RS, Tam GK. Human retention studies with 74As. *Toxicol. Appl. Pharmacol.* 1980;53:550-556.
34. Buchet JP, Lauwerys R, Roels H. Urinary excretion of inorganic arsenic and its metabolites after repeated ingestion of sodium metaarsenite by volunteers. *Int. Arch. Occup. Environ. Health* 1981;48:111-118.
35. Baranov VI, Tanner SD. A dynamic reaction cell for inductively coupled plasma mass spectrometry (ICP-DRC-MS). Part 1. The rf-field energy contribution in thermodynamics of ion-molecule reactions. *J. Anal. At. Spectrom.* 1999;14:1133-1142.
36. Tanner S, Baranov VI, Vollkopf U. A dynamic reaction cell for inductively coupled plasma mass spectroscopy (ICP-DRC-MS). Part III. Optimization and analytical performance. *J. Anal. At. Spectrom.* 2000;15:1261-1269.